

**KUMARAGURU**  
Institutions

# SOCIAL IMPACT

REPORT 2023 - 2024



# THE CONTENT

## 01

ABOUT  
KUMARAGURU  
INSTITUTIONS

---

## 02

SUSTAINABLE  
DEVELOPMENT GOALS

---

## 03

VERTICAL FOR  
SOCIAL IMPACT

- Education
  - Research & Innovation
  - Rescue & Rebuild
  - Health and wellbeing
  - Sustainable Environment
  - Culture and Heritage
  - Empowering Individuals
- 

## 04

COMMUNITY  
CONTRIBUTIONS

---

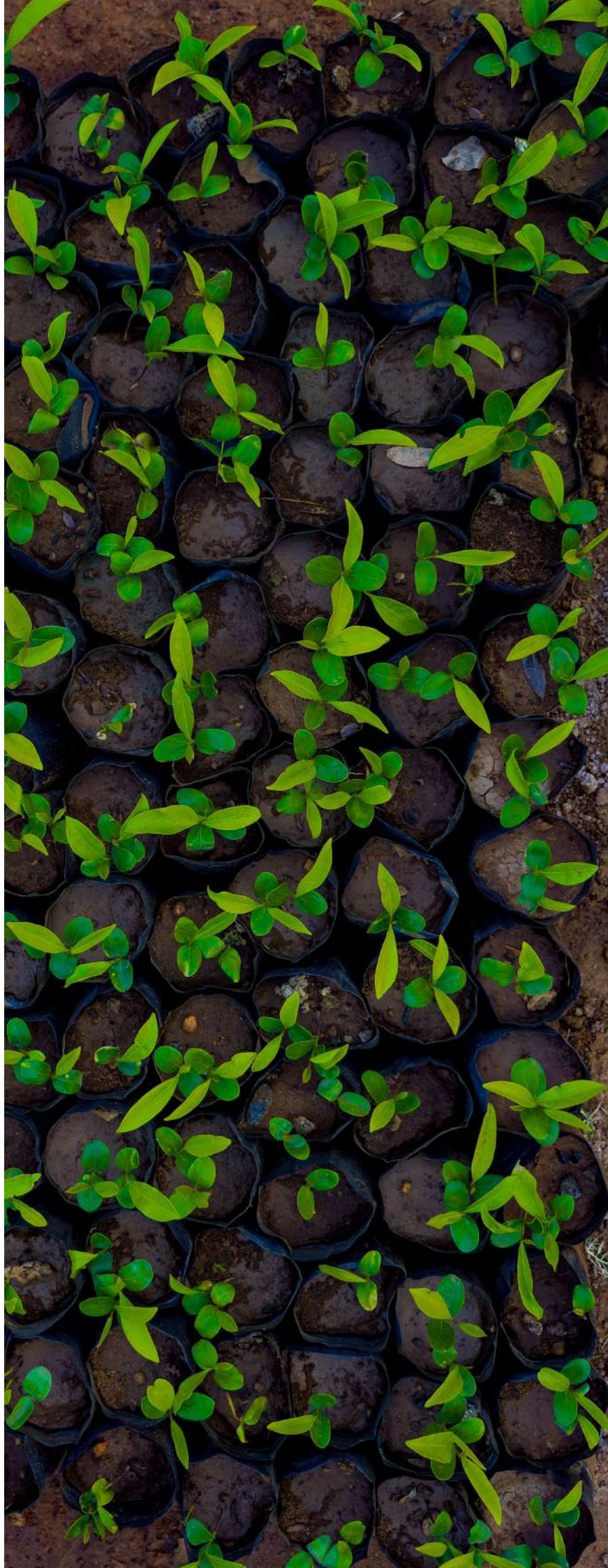
## 05

OUTCOMES

---

## 06

TESTIMONIALS





# FOREWORD

**SHRI SHANKAR VANAVARAYAR**

PRESIDENT,  
KUMARAGURU INSTITUTIONS

---



An institution is a segment of society, one that thrives by enriching its ecosystem. The vision of our founder has been one where individuals or institutions serve as custodians, fostering progress and value on behalf of society. This aligns with the ideals of Mahatma Gandhi.

Like the words of the great saint and philosopher Thiruvalluvar, the wealth of a benevolent person is like the ripening of a fruitful tree in the midst of a town. The ancient dharma of our land speaks about the purpose and potential of empowering, enabling, and enriching the society around us.

The Kumaraguru ecosystem manifests this by enriching its network of people, organizations, and causes both near and far.

We are fortunate to have been endowed with people, platforms, and projects that have made a significant impact. Through education for students from all walks of life, healthcare for the disadvantaged, developmental support measures, and work in the fields of arts, literature, culture, and heritage, our institution continues to inspire.

Our efforts in research, innovation, and entrepreneurship have also been noteworthy in recent years. We are privileged to have many selfless members within our organization who have worked on impactful initiatives. Additionally, the partnerships with the Government, various NGOs, and individuals in our efforts have been remarkable.

Together, drawing inspiration from Saint Vallalar and Mahatma Gandhi, as envisioned by our founder, we continue to focus on the transformation and development of the world around us.



# KUMARAGURU INSTITUTIONS

Kumaraguru Institutions stands tall as a **symbol of commitment to excellence and social progress**. Founded in **1984** by the illustrious **Padma Bhushan Dr N. Mahalingam**, a **visionary, Gandhian, Educationalist, Industrialist, and Philanthropist**, the institution's inception was driven by a powerful vision – to **contribute significantly to India's development through education**. Today, Kumaraguru Institutions have evolved, encompassing **Technology, Liberal Arts & Science, Agriculture, and Business Schools**.

With over **9000 students** and a vast network of **34,000 alumni worldwide**, it continues to shape **empowered and conscious individuals**.

#### **Under the umbrella of Kumaraguru Institutions:**

- Kumaraguru College of Technology (KCT),
- KCT Business School (KCT.BS)
- Kumaraguru College of Liberal Arts and Science (KCLAS),
- Kumaraguru Institute of Agriculture (KIA) and
- Kumaraguru School of Business (KSB)

KCT has recently earned the prestigious **A++ grade** in the **National Assessment and Accreditation Council (NAAC)**, demonstrating its **commitment to academic rigor and quality**. Kumaraguru drives **social transformation** through **sustainable practices, community outreach, and impactful projects**.

# AT THE HELM



**Dr. B.K. Krishnaraj Vanavarayar**  
Chairman



**Dr. M. Manickam**  
Vice Chairman



**Shri M. Balasubramaniam**  
Correspondent



**Shri M. Srinivaasan**  
Treasurer



**Shri Shankar Vanavarayar**  
President



# KUMARAGURU'S

## COMMITMENT TO SOCIAL IMPACT

### FOUNDATIONAL VISION

The foundation of **Kumaraguru Institutions** lies in the vision of its founder, **Dr N. Mahalingam**. He believed in education as a **catalyst for social transformation**, aiming to empower individuals and foster a generation of **socially conscious citizens**. His ideals continue to guide the institution in shaping individuals with **empathy, purpose, and social responsibility**.

---

### ENDURING LEGACY

Dr N.Mahalingam's unwavering commitment to **education, sustainability, and social consciousness** has left an indelible mark. His life and work serve as a beacon of inspiration for **students, staff**, and the community, driving the institution toward a **sustainable and equitable future**.

---

### COMMUNITY IMPACT

Kumaraguru's **social impact** extends through **active community outreach** programs. By fostering **social responsibility** among students and faculty, the institution supports projects that benefit the broader community, aligning with Dr. Mahalingam's transformative vision.

---

### EMPOWERING FUTURE GENERATIONS

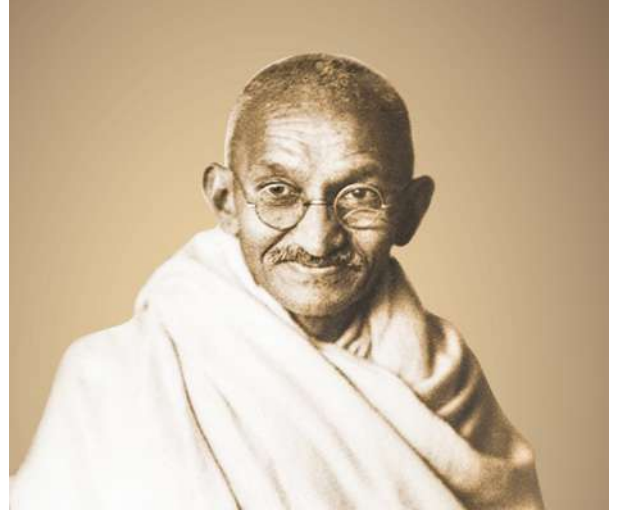
Dr N.Mahalingam envisioned an education system that not only equipped individuals with **technical expertise** but also instilled **values** such as **truth, self-reliance, and compassion**. By combining **academic excellence** with **ethical grounding**, Kumaraguru Institutions empower individuals to bring about **positive societal change**.

---

### A SYMBOL OF SUSTAINABILITY AND IMPACT

Staying true to its founder's vision, Kumaraguru Institutions have become a **symbol of sustainability and societal impact** for thousands of students. The institution champions **renewable energy** reduces its **carbon footprint** and engages in community development projects such as the **Namadhu Pangu initiative**, reflecting its deep commitment to **environmental responsibility**.

# INSPIRING LEGACY



## Enduring Influence of Saint Vallalar

**Saint Vallalar** and **Mahatma Gandhi** are monumental figures in Indian history, leaving a **legacy** through their visionary ideals. Vallalar's deep **spirituality** and advocacy for **universal brotherhood** profoundly inspired **Arutchelvar Dr N. Mahalingam** to adopt a **holistic approach to education**. Like Vallalar, Dr Mahalingam believed in **empowering students with knowledge, compassion, and a commitment to humanity**.

## Philosophy of Mahatma Gandhi

Gandhi's principles of **truth, self-reliance, and nonviolent resistance** deeply resonated with **Dr Mahalingam**. His relentless pursuit of **social responsibility** and **education driven change** reflects Gandhi's ideals. Kumaraguru Institutions encourage **youth-led impactful** initiatives to address **urgent societal challenges**, contributing to **community betterment**.

Kumaraguru Institutions embody the legacies of both **Saint Vallalar and Mahatma Gandhi**, striving to cultivate **socially conscious citizens**. The institution advances their shared vision of a **more equitable and compassionate world**.

மெய்வருத்தம் பாரார் பசிநோக்கார் கண்துஞ்சார் எவ்வெவர் தீமையும் மேற்கொள்ளார் - செவ்வி  
அருமையும் பாரார் அவமதிப்புங் கொள்ளார் கருமமே கண்ணாயினார்

The virtuous endure suffering with patience, While the wicked increase their wrongdoing,  
Nobility is seen in those who persevere, But those consumed by evil meet their doom

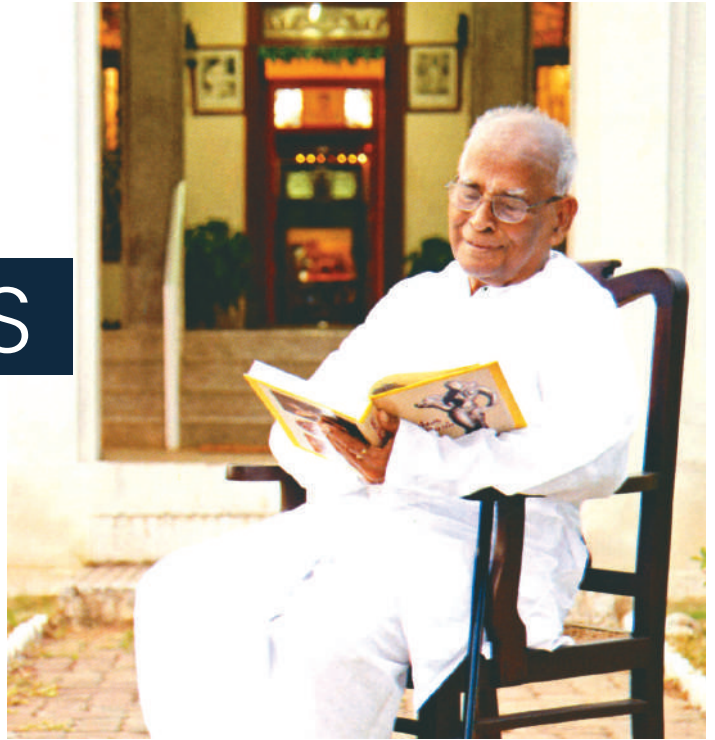
குமரகுருபரர்



# ARUTCHELVAR'S

## SOCIETAL CONTRIBUTIONS

---



### **Embodiment of Gandhian Values and Saint Vallalar's Principles**

From a young age, Arutchelvar N. Mahalingam was profoundly influenced by his father's dedication to simplicity and equality, which instilled in him a deep respect for Gandhian principles. His choice to wear Khadi during his school years and his devotion to Saint Vallalar further shaped his life's path. Embracing the teachings of **Samarasa Suddha Sanmarga Sathya Sangam**, he focused on truth, self-realization, and the promotion of universal harmony.

### **Commitment to Equality**

Throughout his life, **Arutchelvar Dr N. Mahalingam** demonstrated an unwavering dedication to **equality**, ensuring his efforts benefited the **community without discrimination**. His visionary mindset led to significant contributions in **social welfare, spirituality, and economic development**.

### **A Blend of Wisdom and Action**

- **Leader:** Led by example, inspiring others to follow.
- **Teacher:** Imparted essential life skills to future generations.
- **Entrepreneur:** Fostered opportunities in agro-based industries while upholding ethical values.
- **Patron of the Arts:** Supported cultural preservation in fine arts, literature, and music.
- **Policymaker:** Viewed his initiatives as steps toward nation-building.
- **Spiritual Seeker:** Continuously sought divine grace.

Dr N. Mahalingam's diverse contributions spanned **science, technology, arts, literature, and spirituality**, leaving a **profound and enduring impact**. His influence continues to shape **future economic development**, inspiring generations to come.





# ALIGNMENT OF SDG'S

## WITH KUMARAGURU KEY INITIATIVES

The Social Impact Report 2023-24 highlights how Kumaraguru Institutions have aligned their efforts with Six key Sustainable Development Goals (SDGs) set by the United Nations. The alignment with the SDG's showcases the institution's commitment to creating a better future by addressing critical areas such as clean water, economic growth, equality, sustainable living, and environmental responsibility, the institution has also worked to meet all the 17 SDG's.

### **SDG 1**

#### NO POVERTY

Through community development programs, skill-building workshops, and scholarships, Kumaraguru empowers marginalized communities, helping alleviate poverty and improve socioeconomic conditions.

---

### **SDG 2**

#### ZERO HUNGER

Initiatives like the Milk Distribution Program and sustainable agriculture workshops promote food security and improve nutrition, benefiting children and farmers in rural communities.

---

### **SDG 4**

#### QUALITY EDUCATION

Kumaraguru invests in education through scholarships, skill development programs, and rural learning initiatives, providing equitable access to quality education for all, especially marginalized students.

---

### **SDG 7**

#### AFFORDABLE AND CLEAN ENERGY

Solar power projects, energy efficiency programs, and workshops on renewable energy highlight Kumaraguru's commitment to reducing reliance on non-renewable energy.



## **SDG 11**

### SUSTAINABLE CITIES AND COMMUNITIES

Green campus initiatives, urban greening projects, and sustainable infrastructure development contribute to creating eco-friendly and liveable communities.

---

## **SDG 12**

### RESPONSIBLE CONSUMPTION AND PRODUCTION

Programs like waste segregation, composting, and resource optimization foster a culture of sustainable consumption and minimize environmental impact.

---

## **SDG 13**

### CLIMATE ACTION

Through reforestation efforts, carbon footprint reduction programs, and climate awareness campaigns, Kumaraguru actively addresses climate change and promotes sustainable practices.

**These initiatives underscore Kumaraguru Institutions' dedication to addressing critical global challenges and fostering a sustainable, equitable future.**

# KUMARAGURU'S

## APPROACH TO SOCIAL IMPACT

At **Kumaraguru**, **sustainability** is embedded deeply into our core beliefs and practices. We recognize that **true sustainability** can only be achieved through action at **individual, institutional, and societal levels**. This approach is central to our **social impact** strategy, where we aim to make a **lasting difference** across all spheres.

---

### INDIVIDUAL LEVEL

We believe that **sustainable transformation** begins with **education** and **awareness**. Our initiatives focus on empowering individuals to lead **responsible lifestyles and make ethical decisions**. We encourage students to become **changemakers** who understand the impact of their actions on both **society and the environment**.

---

### INSTITUTIONAL LEVEL

At the institutional level, **sustainability** is woven into every aspect of our operations. From **energy-efficient infrastructure** to **waste management**, we strive to set an example in **sustainable practices**. Additionally, we encourage **research and innovation** focused on **sustainable solutions** to address the pressing environmental and social issues of our time.

---

### SOCIETAL LEVEL

Sustainability is not only about what happens within our institution, but also how we engage with the larger community. We actively participate in **collaborative projects, outreach programs, and advocacy efforts** that extend our impact to the **local, national, and global levels**. By working with **governments, NGOs, and industry leaders**, we foster **systemic change** and contribute to a more **equitable and sustainable society**.

# OUR IMPACT

By fostering awareness, modelling sustainable practices, and collaborating with external partners, we ensure that our efforts result in **transformative changes**. Our impact is measured not only by the immediate results of our initiatives but also by the **long-term effect** we have on individuals, communities, and the environment. We aim to cultivate an ecosystem of **positive change**, ensuring that each action we take contributes to a more **sustainable future** for all.

SUSTAINABILITY

SOCIETAL

RESEARCH

INNOVATION

EQUITABLE

ENVIRONMENT



# EDUCATION



## **Empowering Minds: Kumaraguru's Role in Advancing Education and Skill Development**

At Kumaraguru Institutions, education transcends boundaries, paving the way for personal and societal growth. Through innovative scholarships and impactful projects, the institution empowers students to achieve excellence, regardless of socio-economic challenges.



## Highlights

**NM STEP & SEED Student Scholarships**  
**₹1.92 Crores** provided as **STEP scholarship** to support students in engineering. **₹48 Lakhs** awarded as **SEED scholarship** to assist students in Liberal Arts and Science.

**Mahatma Gandhi Merit Scholarships**  
**₹1.46 Cr** awarded to **1,467 students** for academic excellence.

**Sports Scholarships**  
**₹59 Lakhs** awarded to **8 athletes** to balance their academic and sporting aspirations.

**Financial assistance**  
**₹37 lakhs** provided to **49 students** to support their educational aspirations and overcome financial challenges.

**Rural Learning Centre**  
**13,578+ volunteer hours**, empowering **32 rural students** with creative and academic guidance.

Through these efforts, Kumaraguru Institutions are fostering a culture of innovation, inclusivity, and excellence, transforming lives and creating a sustainable impact.

**₹4.88 Crores**  
allocated for  
scholarships

**16,178**  
volunteer  
hours contributed

**2,670**  
individuals  
impacted

# BREAKING BARRIERS WITH NM STEP & SEED SCHOLARSHIPS



The **NM STEP (Scholarship for Technical Education Programme)** and **SEED Scholarships** are designed to support underprivileged students from government, **government aided**, and **trust schools** in Tamil Nadu. These scholarships aim to make **quality education accessible, fostering academic and professional growth** for students from economically disadvantaged backgrounds.

## Purpose

Ensures **equal educational opportunities**, empowering **underprivileged students** and breaking down **socio-economic barriers**.

## Vision

To provide equitable access to quality education, supporting underprivileged students with financial assistance, skill development, and mentorship to promote academic growth, holistic development, and community impact.

## BENEFICIARIES

Over **205 students** supported, with **92 students** through NM STEP at **KCT** and **113 students** through SEED at **KCLAS**. A total budget of **₹8.09 crores** has been utilized under the **STEP program**, and **₹13.5 crores** under the **SEED program**, showcasing Kumaraguru's significant investment in impactful initiatives.

## BUDGET FOR THE ACADEMIC YEAR 2023-24

**₹1.92 Crores** provided as STEP scholarship to support students in **engineering**.

**₹2.19 Crores** awarded as SEED scholarship to assist students in **Liberal Arts and Science**.

## COMPREHENSIVE SUPPORT

- The scholarships cover **tuition, hostel, mess, and transportation** expenses, ensuring students can focus entirely on their studies.
- Beneficiaries also receive access to **technical training, soft skills development, and internships**, preparing them for future success.
- Personalized **mentorship and leadership development** are offered to encourage **holistic growth**.
- Scholarships are awarded based on **merit and financial need**, ensuring the most deserving students benefit.

## IMPACT

- Recipients have shown **improved academic performance**, higher **CGPA scores**, and increased **participation** in extracurricular activities.
- The program has also improved **financial stability** for many families and fostered **leadership skills**, preparing students to become future changemakers.

In Association with



**Global  
Pathway  
School**

# SPORTS SCHOLARSHIPS FOR BALANCED SUCCESS

The **Sports Scholarships** for the academic year 2023-24, worth **₹59 lakhs**, have been awarded to **eight student-athletes**, enabling them to excel in both **sports and academics**.

### Purpose

To support students who demonstrate outstanding sporting talent, removing financial barriers and allowing them to pursue their passion for sports alongside their studies.

### Eligibility

Scholarships are granted to students with **exceptional achievements** in recognized sporting events.

## IMPACT

- Recipients have gone on to represent the institution at **regional and national competitions**, demonstrating holistic development in both academics and sports.



# RECOGNIZING MERIT MAHATMA GANDHI MERIT SCHOLARSHIPS



The **Mahatma Gandhi Merit Scholarship** recognizes and rewards students for **outstanding academic performance**. Over the years, a total budget of **₹6.39 Cr** has been spent on the Mahatma Gandhi Merit Scholarship for **7500+ students**, reflecting Kumaraguru's unwavering commitment to supporting academic excellence and student development. During the academic year **2023-24**, a total of **₹1.42 Cr** was distributed to **1,436 students**.

## Purpose

To support **academic excellence** and encourage students to pursue higher education and their career goals.

## Eligibility

Scholarships are awarded to students who demonstrate **exceptional academic achievements**.

## IMPACT

- Beneficiaries have demonstrated improved **academic results**, enhanced focus on **higher education**, and many have gone on to pursue **advanced studies** and professional careers.

# FINANCIAL ASSISTANCE



Kumaraguru Institutions have consistently supported students in need, **ensuring that financial challenges do not obstruct their educational aspirations**. Over the years, a total budget of **₹2.45 crore** has been allocated for financial assistance, reflecting the institution's unwavering commitment to student welfare.

During the academic year 2023-24, **₹37 lakhs** was provided as financial assistance to **49 students**, enabling them to continue their studies and work toward achieving their career goals.

## Purpose

To support students facing financial difficulties, ensuring equitable access to education and fostering career advancement.

## Eligibility

Assistance is granted to students demonstrating financial need during their academic journey.

## IMPACT

- Beneficiaries have been able to pursue their education uninterrupted.
- This support has empowered students to excel academically and achieve significant milestones in their professional and personal lives.

**This sustained financial aid initiative underscores Kumaraguru's commitment to creating an inclusive and supportive educational environment**

# VENUE SUPPORT FOR EDUCATIONAL AND DEVELOPMENT PROGRAMS

**Namadhu Pangu** is committed to fostering meaningful social change by partnering with organizations that share the **vision of community development and youth empowerment**. These collaborations have led to a series of impactful programs designed to address pressing **social issues**, promote **inclusivity**, and provide **youth with the tools to contribute** positively to society.

## NALANDAWAY CAREER GUIDANCE CAMP



- **Objective:** Provide career guidance and mentorship to underprivileged children in shelters.
- **Volunteers Engaged:** 16
- **Total Community Engagement Hours:** 1,568

### Social Impact:

- The Career Guidance Camp targeted students from child care shelters, empowering them to make informed career choices and plan for their future.
- Through expert talks, workshops, and mentorship, the event provided these children with invaluable resources to help them navigate their educational and professional paths.
- This initiative directly addressed the lack of career support for children in shelters, breaking down social barriers and opening up opportunities for social mobility.



# ANNUAL EVENT

- **Objective:** Empower children from Tamil Nadu shelters through cultural, educational, and wellness activities.
- **Volunteers Engaged:** 17
- **Total Community Engagement Hours:** 170

## Social Impact:

- The Annual Event for Children focused on raising awareness about health, hygiene, and career options for children in shelter homes.
- The event included cultural performances, workshops, and activities designed to boost confidence, creativity, and educational aspirations among the children.
- By providing a platform for underprivileged children to express themselves and engage in positive social activities, the event addressed key issues related to child development, education, and well-being.

---

## MAATRAM FOUNDATION LEADERSHIP CAMP



- **Objective:** Develop leadership skills among youth, fostering a sense of social responsibility.
- **Volunteers Engaged:** 12

## Social Impact:

- The Leadership Camp brought together youth from various backgrounds to engage in leadership training and community-building activities.
- By emphasizing values like social responsibility, empathy, and service to others, the camp inspired young participants to become leaders who can address social issues and uplift marginalized communities.
- This initiative contributed to shaping the next generation of social changemakers, equipping them with the tools to lead initiatives focused on community development and empowerment.



# TEAM EVEREST CELEBRATION



- **Objective:** Celebrate the achievements and growth of students in the Team Everest program, fostering a sense of community and belonging.
- **Volunteers Engaged:** 2
- **Total Community Engagement Hours:** 12

## Social Impact:

- The Farewell Event honored the achievements of Team Everest students, who have worked on social outreach programs.
- This celebration emphasized the value of teamwork, perseverance, and giving back to the community, reinforcing the idea of social responsibility.
- The event inspired students to continue their involvement in community service and motivated them to take on roles that contribute to social change.



---

# AGARAM FOUNDATION TRAINING PROGRAMS AND COMMUNITY EVENTS



- **Objective:** Provide educational support, guidance, and community outreach programs for students, particularly those from underprivileged backgrounds.
- **Volunteers Engaged:** 11

## Social Impact:

- Namadhu Pangu's involvement in Agaram Foundation's programs has been pivotal in providing educational opportunities to students from marginalized communities.
- The foundation's volunteer meetups, career guidance sessions, and farewell events helped students gain practical insights into their academic and professional futures.
- By supporting initiatives that promote education and skill development, this collaboration directly contributed to reducing educational inequalities and empowering students to pursue better futures.

# SHANTHI ASHRAM PEACE FESTIVAL



Shanti Ashram  
Shanti Ashram is an international passion center for development, learning and self-education

- **Objective:** Promote peace, social cohesion, and community solidarity.
- **Volunteers Engaged:** 10
- **Total Community Engagement Hours:** 50

## Social Impact:

- The Peace Festival brought together individuals from diverse backgrounds to engage in peacebuilding activities.
- The event focused on the importance of fostering tolerance, understanding, and unity among communities, addressing key social issues such as conflict resolution and social harmony.
- Namadhu Pangu's participation and With a donation of **Rs.40,000** from kumaraguru institutions, this event reinforced the importance of cultivating a peaceful society by empowering youth to be active contributors to social change.



# BRIDGING GAPS

## RURAL LEARNING CENTRE

The **Rural Learning Centre**, located in **Udayampalayam**, provides essential **foundational education, exam preparation, and creative learning** to students in underserved rural areas.

### Purpose

To **bridge the educational gap** between rural and urban students, ensuring equal opportunities for education and personal development.

### Beneficiaries

The program has directly supported **32 students through 62 structured classes**, creative workshops, and **competition training**.

### HOW IT WAS DONE

Implemented with a budget of **₹1,00,000**, the initiative relied on volunteers who contributed over **13,578 hours**, guiding students in **exam preparation** and providing creative and academic support.

### IMPACT

- The program has **boosted students' academic confidence, enhanced their critical thinking abilities, and prepared them for life challenges**.
- It has also helped students develop a **strong sense of empowerment and self-belief**, encouraging them to pursue further education and opportunities.

---

## DIGITAL INFRASTRUCTURE PROGRAM

### BRIDGING THE DIGITAL DIVIDE IN EDUCATION



The **IEEE Student Branch of Kumaraguru College of Technology** initiated the Digital Infrastructure Program at **Valayapalayam Government High School with a budget of ₹1.5 Lakhs** to enhance digital literacy and promote **STEM (Science, Technology, Engineering, and Mathematics) education**.

### **Purpose**

To equip rural students with technological skills, improve digital literacy, and spark interest in STEM fields.

### **Beneficiaries**

300+ students and teachers gained access to advanced learning tools and hands-on training.

### **HOW IT WAS DONE**

- Installation of monitors, printers, and projectors to upgrade the school's infrastructure.
- Hands-on workshops on Microsoft Office tools like Excel, Word, and PowerPoint.
- Interactive sessions on "Bridge to the Tech Future" to inspire STEM learning.

### **IMPACT**

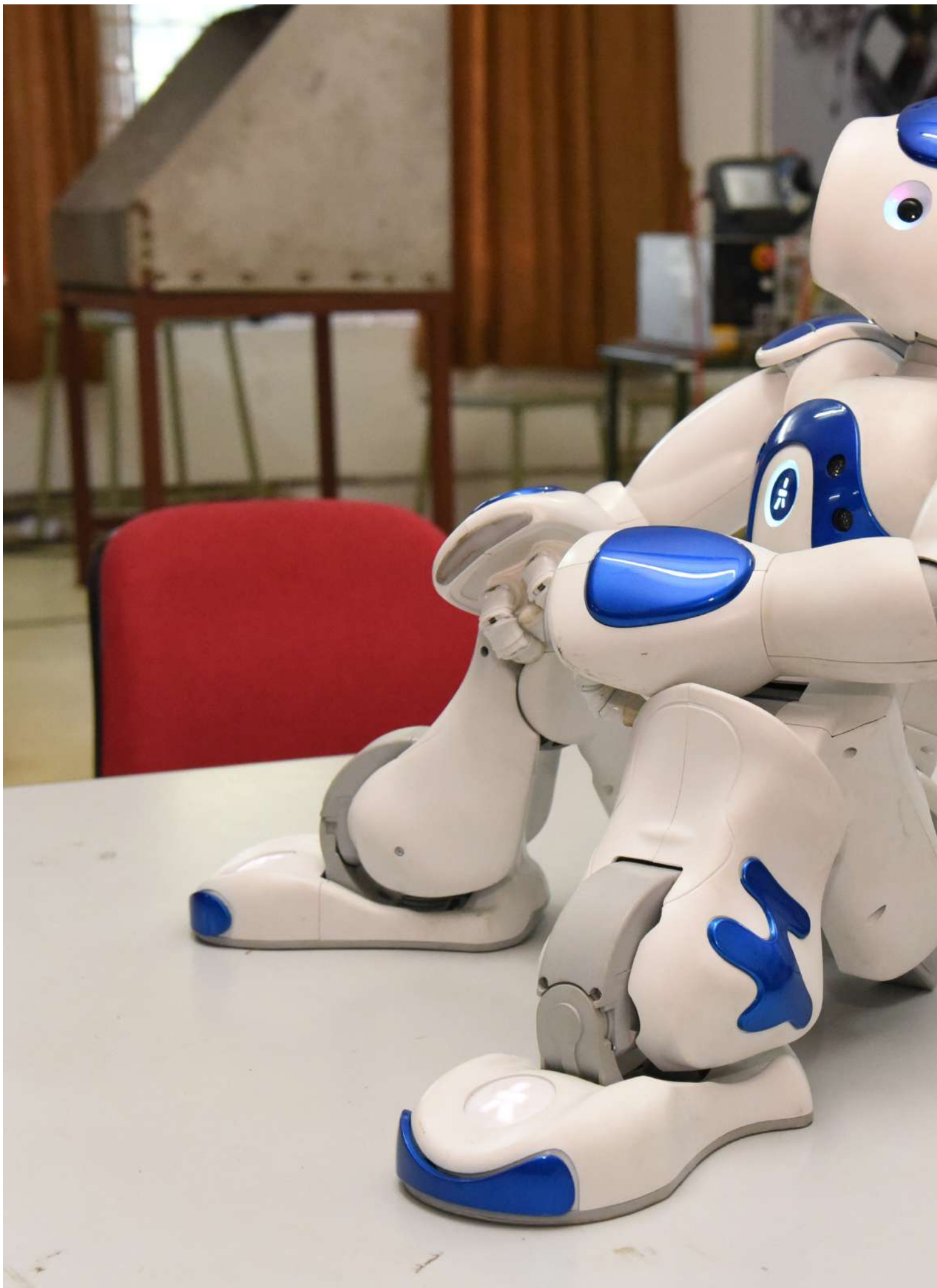
- Boosted technological proficiency and practical software skills among students.
- Strengthened interest in STEM fields, laying a foundation for future careers.
- Improved teaching effectiveness and classroom engagement through technology integration.

---

**Kumaraguru Institutions' education initiatives transform lives by making education inclusive, accessible, and equitable. By providing financial support, mentorship, and skills training, the institution ensures that students from all backgrounds can succeed. These programs enhance academic outcomes, foster personal growth, and drive community empowerment for a sustainable impact.**









## INSIGHTS

The Research and Innovation section of the Social Impact Report 2023-24 highlights Kumaraguru's continued commitment to advancing knowledge and fostering creative solutions to real-world challenges. This year, our focus has been on applying research and innovation to address social, environmental, and technological issues, with the goal of making a tangible impact in our communities and beyond.

Through collaboration with industries, academic institutions, and local stakeholders, we have explored new ideas and technologies that drive change and support sustainable development. From innovative solutions in education and healthcare to advancements in sustainability practices, our efforts in research and innovation reflect a collective dedication to improving lives and creating lasting value.

This report provides an overview of the significant strides made in these areas, serving as both a reflection of our achievements and a foundation for future endeavours. As we continue our journey in research and innovation, we remain focused on fostering an environment that encourages exploration, creativity, and meaningful change for the greater good.

**Nirosh Kumar H**

Head of the Department, RiG

# RESEARCH & INNOVATION



## **Driving Progress: Kumaraguru's Dedication to Research and Innovation**

Kumaraguru Institutions are at the forefront of driving **sustainable change** through innovative projects that address critical societal and environmental challenges. By empowering startups, supporting underprivileged students, and developing cutting-edge technologies, the institution is making a significant impact on communities both locally and globally.



Through these initiatives, Kumaraguru Institutions are fostering innovation and sustainability, addressing societal and environmental challenges. By supporting startups, empowering students, and advancing green technologies, they are driving positive change locally and globally, contributing to a more sustainable future.

## Highlights

### FORGE

Impact Innovation Grants Program

### Innovation Fellowship Grant

88 Students Benefitted (58 boys, 30 girls)

**Focus Areas:** Rapid prototyping, design thinking, and emerging technologies.

**Impact:** Empowering underprivileged students through mentorship and innovation.

### i-Surf Project

Electric Bike for Campus Commuting

**Objective:** Promote eco-friendly, zero-emission transport for short-distance commutes on campus.

### Plant Disease Monitoring System

AI and Image Processing Solution for Farmers

**Purpose:** Early detection of plant diseases to minimize crop losses.

### Renewable Energy Innovation

Integrated Tilting Solar Tracker (iTST)

**Impact:** Reduces CO2 emissions by 28,032 kg annually.

### LFP Battery Energy Storage System

Energy Storage Capacity: 2 kWh, 95% efficiency.

**Impact:** Supports off-grid operations and grid stabilization.

### Trike – Police Patrolling Vehicle

**Impact:** Provides eco-friendly and efficient patrolling in urban areas.

### Sea Sakthi – YALI 3.0

**Technology:** Hydrogen fuel cell-powered marine vessel.

**Impact:** Zero emissions, contributing to ocean pollution reduction

**₹99,020**  
allocated for  
innovation grants

**28,032 kg**  
of CO2 reduced  
annually

**88 students** benefited  
from innovation  
fellowships

# TRANSFORMATIVE GRANTS FOR SOCIAL IMPACT



**The Impact Innovation Grants Program supports pilot projects, enabling startups to bring their innovations to life while minimizing financial risks for buyers.** In collaboration with **HDFC Bank** and **Karur Vysya Bank (KVB)**, **Forge Innovation & Ventures** has launched two transformative grant initiatives: **HDFC Parivartan** and **Impact Innovation Nexus**. These programs provide essential funding and support to startups dedicated to solving pressing social and environmental issues.

## Startups benefiting from the Impact Innovation Nexus (KVB) program include:

- **Suzhiyam Industrial Machines:** Enhancing boiler efficiency by 30%, which reduces energy consumption and promotes sustainable industrial practices.
- **JSP Enviro:** Developing systems to treat textile wastewater while simultaneously generating electricity, thereby addressing pollution and energy needs.
- **Goenvi Technologies:** Converting plastic waste into clean cooking fuel, turning environmental waste into a valuable resource.
- **GoWatr Pvt Ltd:** Utilizing smart technology to optimize water distribution in 11 villages, ensuring efficient and equitable access to water.

## Under the HDFC Parivartan initiative, startups are focused on creating sustainable infrastructure solutions:

- **Tellus Habitat:** Recycling **45,000 liters of water daily** through automated sewage treatment plants, significantly conserving water resources for communities.
- **Greenvironment:** Digitizing water distribution systems in six communities to enhance efficiency and reduce water wastage.
- **Solinas Integrity:** Deploying robotic systems to inspect and clean stormwater drains in Chennai, achieving a **fivefold reduction in cleaning costs** and improving urban sanitation.

# IMPACT

These grants have led to substantial **environmental benefits** by reducing waste, conserving water, and lowering pollution levels. Additionally, they have **uplifted communities** by providing sustainable solutions that ensure better resource management and improved quality of life. Economically, these initiatives have enhanced **industrial efficiency** and reduced operational costs for urban infrastructure management.



**BASEs** are full-stack Industrial Innovation Centres offering the full range of Forge's strategic engagement programs spanning deep technical infrastructure, services and resources to seed, nurture, accelerate **Phy'gital** tech ventures and accelerate technology-enabled, innovation-catalysed Industrial Transformation.



**HUBs** focus on implementing Corporate Venture Studio programs with industrial majors as well as startup catalysis services to help startups win at every stage of the venture lifecycle.



**NODEs** are innovation centres operated inside University campuses or Industrial Parks aimed at Capability Building and Product Development

## FORT.Chennai (BASE)

Sriperumbudur | 45,000 sq. ft.

Set in the heart of South Asia's largest auto manufacturing hub, the FORT.Chennai centre is aimed at supporting startups in the development of technologies in future mobility - thereby driving the transformation of Chennai's manufacturing sector from components suppliers to tech majors in mobility and aerospace, to make it the undisputed Industrial-Tech capital of Asia.

## FORT.Hosur (BASE)

Hosur | 60,000 sq. ft.

Located 40 kms east of Bangalore - the startup capital of India, the FORT.Hosur centre is the ideal launchpad to bridge the manufacturing industry with technology startups to co-create Advanced Manufacturing solutions and enable the MSME sector to achieve manufacturing excellence.

## Forge.Factory (BASE)

Coimbatore | 27,000 sq. ft.

Forge's headquarters in TN's foremost industrial hub offers a comprehensive suite of infra, facilities and services including coworking spaces & product innovation labs aimed accelerating hardware and tech innovation, and creating enterprises that harness hardware, software, and computing technologies to solve real-world problems, drive economic growth, and deliver social impact.

## Forge.Fast Accelerator (HUB)

Chennai | 3000 sq. ft.

Forge.Fast is a dynamic 6-month accelerator initiative housed at the prestigious IIT-M Research Park in Chennai for Industrial Hardware Startups - with a cohort of 20-25 startups, including 8-10 in residence. The centre is aimed at driving startup success, offering Forge's entire stack of value additions to expedite their path toward achieving product-market fit.

## INNOVATE TN NODES

The InnovateTN labs across 4 cities in TN operate as self-contained Integrated Industrial Innovation Labs, creating a robust innovation ecosystem in and around these industrial hubs. by leveraging an Open Innovation Model for government, MSMEs, technology providers, academia, R&D, innovators & startup entrepreneurs, investors, and incubators to collaborate and co-create industry-oriented cutting-edge technology solutions.

## Forge.Lab (L2 NODE)

Salem | 10,000 sq. ft.

## Forge.Lab (L2 NODE)

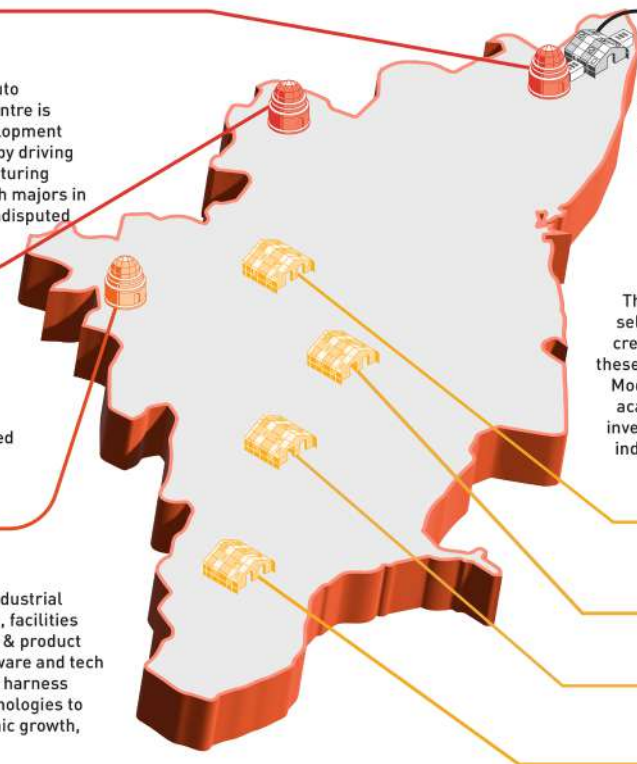
Trichy | 10,000 sq. ft.

## Forge.Lab (L2 NODE)

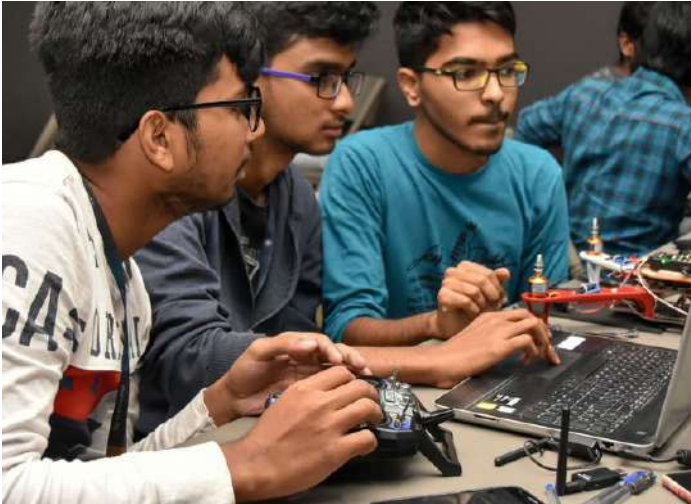
Madurai | 15,000 sq. ft.

## Forge.Lab (L2 NODE)

Tirunelveli | 10,000 sq. ft.



# EMPOWERING STUDENTS TAMIL NADU INNOVATION FELLOWSHIP GRANT



**The Tamil Nadu Innovation Fellowship Program** is a pivotal initiative aimed at empowering students by providing them access to advanced resources and mentorship. In partnership with the **Tamil Nadu Adi Dravidar Housing and Development Corporation (TAHDCO)**, this program fosters creativity and technical skills through Fab Labs and Maker Spaces.

## Participants

A total of **88 students (58 boys and 30 girls)** have benefitted from this fellowship.

## Focus Areas

The program emphasizes **rapid prototyping, design thinking, and emerging technologies**, enabling students to develop innovative projects that address community needs.

## IMPACT

Students have successfully created projects that solve local issues, enhancing their **innovative capacities** and contributing to **community welfare**. This initiative promotes **educational equity and skill development**, ensuring that talented students from disadvantaged backgrounds can thrive and make meaningful contributions to society.

# i-SURF PROJECT

## ECO-FRIENDLY MOBILITY FOR A SUSTAINABLE CAMPUS

The **i-Surf Project** embodies the principles of **creativity, collaboration, and eco-consciousness**, aligning with Kumaraguru's commitment to sustainability.

Designed for short-distance campus commutes, the project demonstrates the potential of **green technology** in reducing **carbon footprints and fostering environmental awareness**.

### KEY OBJECTIVES AND ACHIEVEMENTS

#### Eco-Friendly Innovation:

The electric bike operates with **zero emissions**, providing an **environmentally responsible alternative** to conventional vehicles.

#### Campus Sustainability:

By promoting **green commutes**, the project supports the institution's broader **sustainability goals** and encourages **eco-conscious practices**.

#### Learning Platform:

The project enabled **iQube members** to apply engineering skills, fostering **teamwork and problem solving** through hands-on development.

**Technological Leadership:** Highlighting **iQube's innovation**, the project positions it as a leader in **eco-innovation**, inspiring similar initiatives.

**Awareness Building:** The initiative raises awareness about **sustainable mobility**, encouraging discussions on **green technologies**.

### VISION AND IMPACT

The **i-Surf Project** envisions a **sustainable future** driven by **innovation** and **creativity**, inspiring students and staff to adopt **environmentally conscious practices**. It reflects Kumaraguru's mission to empower individuals to contribute to a **greener, more sustainable world**.

The **i-Surf Project** is a milestone in Kumaraguru's journey toward **sustainability and technological progress**. By combining learning opportunities with **practical solutions**, the project sets a benchmark for **eco-friendly innovation**, driving meaningful change within the campus and beyond.



# DRIVING AGRICULTURAL RESILIENCE

## PLANT DISEASE MONITORING SYSTEM



**The Plant Disease Monitoring System** developed by Kumaraguru's innovation team leverages **AI and image processing** to detect plant diseases early, enabling farmers to take timely action and reduce crop losses.

### Purpose

To support **sustainable farming practices** and ensure **food security** by minimizing crop losses.

### Who Benefits

Farmers in rural areas who rely on agriculture for their livelihoods.

### IMPLEMENTATION

The system is deployed as a **mobile app**, allowing farmers to easily capture images of their crops and receive instant diagnoses and recommendations.

### IMPACT

This technology has the potential to **significantly reduce crop losses**, leading to healthier yields and more stable incomes for farmers. By preventing widespread disease outbreaks, it also contributes to **environmental sustainability and economic resilience** in agricultural communities.

# INTEGRATED TILTING SOLAR TRACKER

## ADVANCING RENEWABLE ENERGY SOLUTIONS



The **Integrated Tilting Solar Tracker (iTST)** is an advanced system designed to maximize the efficiency of solar panels by following the sun's trajectory, thereby enhancing energy output and reducing **CO2 emissions**.

### Purpose

To promote **renewable energy and improve energy efficiency** through innovative solar technology.

### Who Benefits

**Industries, households, and renewable energy** projects seeking efficient and sustainable energy solutions.

### IMPLEMENTATION

The solar tracker is deployed in various settings, including industrial rooftops and residential areas, ensuring optimal energy capture throughout the day.

### IMPACT

The iTST reduces **28,032 kg of CO2 emissions annually**, contributing to a cleaner environment and promoting the adoption of **green energy**. With a budget of **₹99,020**, **this project underscores** the institution's commitment to **sustainable development and environmental conservation**.

# LFP BATTERY

## ENERGY STORAGE SYSTEM



**The LFP Battery Energy Storage System** offers a reliable and efficient solution for storing renewable energy, making it ideal for homes and small businesses.

### **Purpose**

To support **renewable energy integration and provide backup power**, enhancing **energy reliability** for communities.

### **Who Benefits**

**Residents, small businesses, and communities** seeking sustainable and reliable energy solutions.

### **IMPLEMENTATION**

The system is installed in various settings to store energy from renewable sources, ensuring continuous power supply during outages and optimizing energy use.

### **IMPACT**

With a **2kWh capacity and 95% efficiency**, this system supports **off-grid operations and grid stabilization**, promoting sustainable energy use and reducing reliance on **fossil fuels**.

# TRIKE – POLICE PATROLLING VEHICLE

## URBAN MOBILITY FOR PUBLIC SAFETY



**Trike** is a lightweight and efficient electric vehicle developed by Kumaraguru Institutions to enhance the mobility of police and security personnel in crowded urban areas.

### Purpose

To improve **public safety and police efficiency** by providing a nimble and eco-friendly patrolling option.

### Who Benefits

**Local police, campus security, and municipal authorities** responsible for maintaining public order.

## IMPLEMENTATION

Developed by Kumaraguru Institutions, Trike is equipped with **RFID ignition and GPS** for precise tracking and management. It has been tested in collaboration with security forces to ensure it meets the demands of urban patrolling. The vehicles were donated to the city police to enhance their patrolling capabilities.

## IMPACT

Trike has **improved response** times during emergencies and events, enhancing **public safety and security** in high-density areas. With a budget of **₹99,020**, this project demonstrates Kumaraguru's commitment to **sustainable urban policing**.

# SEA SAKTHI – YALI 3.0

## SUSTAINABLE MARINE SOLUTIONS



**YALI 3.0** is an energy-efficient marine vessel developed by **Team Sea Sakthi**, equipped with a **hydrogen fuel cell and an indigenous propulsion system** to reduce maritime emissions.

### Purpose

To advance **sustainable marine transportation** by reducing carbon emissions and promoting **clean energy** in the maritime industry.

### Who Benefits

The **global maritime industry, shipping companies, and environmental sustainability** initiatives focused on marine operations.

### IMPLEMENTATION

YALI 3.0 was developed through collaboration and innovation, and it was successfully tested during the **Monaco Energy Boat Challenge**, where it demonstrated its capabilities.

### IMPACT

The vessel achieved **zero emissions and improved energy efficiency**, significantly contributing to **ocean pollution reduction and green energy adoption** in maritime transport. Team Sea Sakthi's success at the Monaco challenge showcases India's leadership in **sustainable marine innovation**.

# RESEARCH AND INNOVATION

**Kumaraguru Institutions' Research and Innovation initiatives are making meaningful contributions to sustainable development, community welfare, and environmental conservation. By supporting startups, empowering underprivileged students, and developing innovative technologies, the institution is creating a lasting positive impact on society. These projects not only address immediate challenges but also pave the way for a greener, more equitable future.**



# RESCUE & REBUILD



## **Building Resilience: Kumaraguru's Commitment to Rescue and Rebuild Efforts**

Kumaraguru Action for Relief & Empowerment (KARE) plays a vital role in providing relief and support to communities during times of crisis. Through **restoration efforts, relief operations, and animal welfare initiatives**, KARE is committed to building **resilient communities** and fostering **sustainability** in the aftermath of disasters.



Through **swift action and sustainable solutions**, KARE's mission is clear; to support communities in crisis and ensure long-term recovery and empowerment.

## Highlights

### Flood Restoration in Thoothukudi

KARE's quick response helped farmers return to work by **repairing agricultural motors** damaged by floods, ensuring vital food production continued.

### Cyclone Michaung Relief

In the aftermath of **Cyclone Michaung**, KARE distributed **100 relief kits** and **1 ton of milk powder**, providing essential aid to affected families.

### Animal Welfare

The **Animal Welfare** Initiative rescued and rehabilitated **injured animals**, providing them with medical care and fostering compassion within the community.

**₹4 Lakhs** allocated for flood relief in Thoothukudi.

**2100 families** received relief kits and 1 ton of milk powder.

**6 animals** rescued and rehabilitated



# FLOOD RESTORATION IN THOOTHUKUDI



In response to the severe floods that struck **Thoothukudi**, KARE led a **three-day flood restoration initiative** in collaboration with the **Department of Electrical and Electronics Engineering**. The primary goal was to restore **agricultural motors** that had been damaged by heavy rains, enabling farmers to resume their vital work.

## Purpose

The initiative was designed to **revive farmers' livelihoods**, ensuring that agricultural activities could continue, thus preventing financial losses and safeguarding food security.

## Beneficiaries

The **farmers in Thoothukudi** and people affected by flood benefitted the measures.

## HOW IT WAS DONE

KARE, alongside volunteers and technical experts, worked to repair the damaged motors, ensuring they were fully functional for farming use. The restoration was completed within three days, providing a quick and efficient solution to the immediate crisis. The total expenditure for the relief effort amounted to INR 3 lakhs.

## IMPACT

The restoration of agricultural motors allowed farmers to **resume their work**, which was crucial for their livelihood and for maintaining **food production**. While specific data on the number of motors restored is not provided, the initiative ensured that agricultural activities were quickly restored, helping farmers return to normal operations and reducing economic losses.

# SUPPORT FOR CHENNAI'S FLOOD-AFFECTED COMMUNITIES



Following the impact of **Cyclone Michaung** and the resulting **floods in Chennai**, KARE launched a **relief operation** to support the affected communities. The floods caused **severe waterlogging, power outages**, and left many residents stranded without essential supplies.

## Purpose

KARE's relief efforts aimed to provide **immediate support** to the affected communities, offering basic necessities and alleviating some of the hardships caused by the disaster.

## Beneficiaries

The relief efforts targeted **vulnerable communities**, but specific details on the number of families or individuals supported are not mentioned.

## HOW IT WAS DONE

KARE distributed **100 relief kits**, each containing **biscuits, mosquito coils, water bottles, blankets, and other essential items**. Additionally, **one ton of milk powder** was provided to help meet the nutritional needs of affected families. The total expenditure for the relief effort amounted to **INR 4 lakhs**.

## IMPACT

The **timely distribution** of relief materials provided **immediate assistance**, helping families to survive in the days following the flood. While the exact number of beneficiaries is not stated, the operation played a crucial role in providing basic supplies and alleviating distress in the affected areas.

# COMPASSION IN ACTION

## ANIMAL RESCUE AND REHABILITATION



The **Animal Welfare Club** at Kumaraguru focuses on the rescue, treatment, and rehabilitation of injured and abandoned animals, ensuring that they receive proper care and protection.

### Purpose

The initiative aims to **rescue and care for injured and abandoned animals**, improving their health and well-being while promoting **humane treatment** of animals within the community.

### Who was involved

The beneficiaries of this initiative were the rescued animals, including **5 puppies, 1 dog with a broken leg**, and others requiring urgent medical attention.

### HOW IT WAS DONE

Volunteers worked alongside veterinarians to provide **medical treatments**, including **vaccinations, flea and tick treatments, and birth control**. The club also set up **15 water troughs** around the campus to support stray animals. Rescued animals were provided with care until they could be adopted or rehabilitated.

### IMPACT

The initiative successfully **rehabilitated and adopted numerous animals**, reducing the number of injured or abandoned animals on campus and in the surrounding areas. Through this work, the club also raised awareness about **animal welfare** and humane treatment, ensuring a compassionate approach to animal care.

# RESCUE AND REBUILD

**KARE's ongoing mission to provide relief, restoration, and rehabilitation demonstrates its commitment to building resilient communities. Whether it's restoring agricultural operations after floods, offering relief in the wake of natural disasters, or providing care to injured animals, KARE is dedicated to making a lasting, sustainable impact. Through these efforts, KARE not only addresses immediate needs but also fosters long-term recovery and community resilience.**



# HEALTH & WELLBEING

A close-up photograph of a person's arm with an IV drip. The person is holding a yellow smiley face toy. The background is blurred, showing other people in a hospital or clinic setting. The text 'HEALTH & WELLBEING' is overlaid in white at the top left.

## **Health and Wellbeing: Kumaraguru's Commitment to Community Health**

Kumaraguru Institutions are committed to improving community health by addressing both physical and mental well-being. Through initiatives focused on **combating malnutrition, mental health awareness, and empowering women**, the institution is creating a sustainable impact on the health and resilience of local communities.



Through these impactful initiatives, Kumaraguru continues to champion **holistic health, creating healthier, more resilient communities** for a brighter future.

## Highlights

### Milk Distribution Initiative

- **5 Schools** supported with **5,040 liters of milk**, benefitting **949 children**.
- **200 Volunteers** dedicated **21,000+ hours** to combat malnutrition and improve children's health.

### Mental Health Initiatives

#### Mental Health Forum at Kumaraguru

**Participants:** 2,000+

**Purpose:** Foster a supportive, stigma-free environment.

**Impact:** Enhanced understanding and support for mental health.

#### Mental Health First Aid Training

**Trained Youth:** 25

**Reach:** 2,000+ beneficiaries

**Impact:** Shifted campus culture towards mental health awareness and support.

#### Your DOST – Online Counselling Service

**Users:** 2,195

**Sessions:** 1,978

**Purpose:** Accessible, confidential mental health support.

**Impact:** Increased mental health awareness and inclusivity.

**₹2,85,850** spent on the Milk Distribution Initiative

**21,000+** volunteer hours contributed

**949 children** benefited from milk distribution

# COMBATING MALNUTRITION MILK DISTRIBUTION INITIATIVE



Aiming to tackle **malnutrition**, a pressing issue affecting children's growth and learning, Kumaraguru launched the **Milk Distribution Initiative**. Every Friday, **144 liters of Sakthi Milk** were distributed to five schools, reaching **948 children** across the region. The initiative ran for **35 visits** with the help of **200 volunteers**, and in total, **5,040 liters of milk** were distributed, contributing over **21,000 hours** of community service.

## Purpose

The initiative addresses the pressing issue of **malnutrition** among schoolchildren, which can hinder learning, attendance, and overall development.

## Outcome

The program directly benefitted **949 children** in five schools across areas such as **Chinnavedampatty, Anjugam Nagar, Udayampalayam, NG Pudhur, and Chinnamettupalayam**.

## HOW IT WAS DONE

Volunteers distributed the milk regularly, ensuring that children received essential nutrients every week.

**TOTAL AMOUNT SPENT: RS. 2,85,850**

## IMPACT

By providing a **reliable source of nutrition**, the program has **improved children's overall health**, helping to enhance **attendance rates** and **learning capabilities**. Healthier children are more likely to attend school regularly, which positively impacts their academic performance and long-term development.

# EMPOWERING WOMEN MENSTRUAL HYGIENE

In **Kanjampatti Village**, a **World Menstrual Hygiene Awareness Program** was conducted, educating **50 women** about menstrual health and distributing **sanitary products** to improve hygiene and comfort during menstruation.

## Purpose

To raise awareness about **menstrual health** and empower women with knowledge about **hygiene practices and health**.

## Outcome

The program directly impacted **50 women** in Kanjampatti Village, providing them with essential education and resources.

## IMPACT

The program has **empowered women** with knowledge about menstrual hygiene, improving their health and well-being, and reducing the stigma associated with menstruation. By distributing **sanitary products**, it ensured that women had access to **safe and hygienic menstrual care**.

# LEPROSY CARE AND REHABILITATION

The **Leprosy Hospital**, established in **1988**, provides treatment, rehabilitation, and training services. With a capacity of **50 beds**, it has treated over **15,000 patients** to date.

- **Purpose:** To offer medical care, socio-economic rehabilitation, and educational support for leprosy-affected individuals.
- **Scope:**  
**Patient Care:** Treats approximately **230 patients** annually.  
**Training:** Nodal Training Center for Medical Officers and Paramedical personnel.
- **Impact:** Over **15,000 patients** treated, and healthcare capacity strengthened through training initiatives.
- **Budget (2023-24):** ₹15.12 lakhs allocated for treatment, rehabilitation, and training.



# MENTAL HEALTH

Kumaraguru Institutions have taken significant steps to promote mental health awareness and support across their community. These initiatives have engaged thousands of participants, fostering a supportive and open environment where mental health is prioritized, and stigma is reduced.

## FORUM FOR MENTAL HEALTH



Established in 2023-24, the Mental Health Forum has engaged over **2,000 participants** through training sessions and awareness programs. In collaboration with MPower, the forum conducted initiatives like the IYC, reaching 350 participants and encouraging open conversations about mental health.

### Purpose

To foster a supportive and open environment where mental health is prioritized, and stigma is reduced.

### Who was involved

Students, faculty, and mentors from across the institution participated, creating a wide-reaching impact.

### HOW IT WAS DONE

Training sessions, workshops, and collaborations with MPower were organized, encouraging discussions on mental health.

### IMPACT

The initiative has led to a more inclusive campus environment, where mental health is no longer a taboo subject, and there is greater understanding and support among the community.

# TRAINING YOUTH IN MENTAL HEALTH FIRST AID



Kumaraguru's COPE Community, mentored by the **Aditya Birla Education Trust**, trains youth as mental health first aiders. This group of **25 trained individuals** has reached over **2,000 beneficiaries** through education on coping mechanisms and emotional intelligence.

## Purpose

To reduce mental health stigma and promote a supportive environment on campus.

## Who was involved

Over 2,000 students and community members benefited from mental health training and guidance.

## HOW IT WAS DONE

Workshops and sessions focused on coping mechanisms, emotional intelligence, and reducing stigma around mental health.

## IMPACT

The initiative has created a positive impact on the mental health culture at Kumaraguru, equipping individuals with the knowledge to recognize and address mental health challenges effectively, fostering a supportive campus culture.

# MENTAL HEALTH SUPPORT AT KUMARAGURU



## ONLINE COUNSELLING SERVICE

Launched in September 2020, Kumaraguru partnered with **Your DOST to offer online counselling services to students and faculty members.** This service includes both face-to-face sessions and 24/7 anonymous online counselling. Between October 1, 2024, and September 30, 2025, an MoU was signed to further enhance support.

### Purpose

To provide accessible mental health support through online counselling, available at any time, while maintaining confidentiality.

### Who was involved

Kumaraguru's students and faculty members were the primary beneficiaries, with over 2,000 individuals engaged.

### HOW IT WAS DONE

Counselling sessions were offered through face-to-face meetings and anonymous online support, with **2,195 users** signing up for the service.

### IMPACT

**1,978 counselling sessions** have been conducted, contributing to greater mental health awareness and support across the institution.

---

## IN-PERSON COUNSELLING SERVICE

Kumaraguru's counselling supports are pivotal in fostering emotional well-being and creating a supportive environment for students, staff, and parents.

**781 individual counselling sessions** were conducted across the academic year, addressing personal, emotional, and behavioral challenges.

- **643 sessions** for students, focusing on issues like relationships, loneliness, and mental health.
- **130 sessions** for parents, providing support for disciplinary concerns and emotional challenges.
- **128 sessions** for admin staff and **123 sessions** for faculty, emphasizing parenting support, team dynamics, and health.
- **53 sessions** for alumni to address post-academic concerns.
  
- **134 group sessions** conducted throughout the year, focusing on:
  - Mental health awareness and adolescent behaviour.
  - Safe social media usage, self-esteem, and gender sensitization.
- **March** recorded the highest participation with **116 individual sessions** and **15 group sessions**, reflecting peak engagement in the program.

This initiative highlights Kumaraguru's commitment to prioritizing mental health, ensuring a resilient and emotionally healthy community.

---

**Kumaraguru Institutions' Health and Wellbeing initiatives have notably impacted the community by addressing malnutrition, promoting mental health awareness, and empowering women through hygiene education. These efforts foster long-term resilience and inclusivity, ensuring a healthier future for all.**







## INSIGHTS

The Environmental Sustainability section of the Social Impact Report 2023–24 highlights Kumaraguru’s ongoing efforts to address environmental challenges and promote sustainable practices within the community. This year, we have focused on initiatives that aim to reduce our ecological footprint, conserve natural resources, and encourage responsible consumption.

Our efforts have ranged from promoting waste reduction and energy efficiency to fostering a deeper understanding of sustainability among students and the broader community. These initiatives reflect our commitment to creating a more sustainable environment, both on campus and beyond.

This report offers a look at the progress made so far, and it serves as a reminder of the work that still lies ahead. As we move forward, we continue to strive for practical solutions and collective action to ensure a healthier, more sustainable future for all.

### **Saravanan C**

Assistant Vice President  
Kumaraguru Institutions

# ENVIRONMENTAL SUSTAINABILITY



## **Nurturing the Planet: Kumaraguru's Pledge to Environmental Sustainability**

Kumaraguru Institutions are dedicated to fostering a **sustainable environment** by integrating **renewable energy, efficient waste and water management, and biodiversity preservation** into campus operations. Through strategic initiatives, the institution is creating a **model for environmental responsibility** while making a **lasting impact** on the community and ecosystem.

Through these impactful initiatives, Kumaraguru continues to champion holistic health, creating healthier, more resilient communities for a brighter future.

## Highlights

### Energy Efficiency

- **36% of campus operations** powered by **renewable energy** through a **250 kW Onsite Rooftop Solar PV System** and **65,000 kW of green power** purchased monthly.

### Waste Management

- **300+ kgs of vegetable peels** composted monthly, generating **3 tons of organic manure annually**.
- Revenue generated: **₹50 Lakhs** from waste management efforts.

### Water Conservation

- **1 MLD Sewage Treatment Plant (STP)** recycling 100% of wastewater for landscape irrigation.
- **50,000+ liters** saved daily through water-efficient fixtures.

### Biodiversity and Resource Management

- **5,000+ trees** from **70+ species** enhancing the campus ecosystem.
- Ahimsa Vanam: **1-acre curated forest** with **150+ species of flora and fauna**.
- **1.5 lakh seedlings** nurtured annually in the native tree nursery.

### Samathur Biodiversity Study

- To date, over **130 bird species, 100 butterfly species, and 120 plant species** have been recorded.

### Awards and Recognition

- **IGBC Platinum Rating** for Green Building Certification (5 consecutive years).
- **Green Championship Award** by TNPCB.
- **Zee Edu Future Changemakers Award** for Best Environmental Practices.

**₹50 Lakhs**  
revenue generated from  
waste management.

**250+ tons**  
of waste  
recycled

**80 lakh**  
liters of water  
harvested annually



# SUSTAINABLE ENVIRONMENT



## ENERGY EFFICIENCY: POWERING THE CAMPUS SUSTAINABLY

**250 kW Onsite Rooftop Solar PV System** and the purchase of **65,000 kW of green power per month power 36% of campus operations** through renewable energy.

These measures significantly reduce **carbon emissions**, aligning with the institution's **sustainability goals**.

---

## WASTE MANAGEMENT: RECOVERING AND REPURPOSING RESOURCES

The **Resource Recovery Park**, established **three years ago**, is a cornerstone of Kumaraguru's **waste management efforts**, fostering a culture of **recycling and upcycling**.



The initiative has generated over **₹50 lakhs in revenue**, reinforcing the financial sustainability of waste management

**250+ used buckets upcycled**, with **10% of students** opting to participate in the program.

**250+ tons of resources recovered** using a **4-step segregation** process, sorting waste into **25+ categories**.

**300+ kgs of vegetable peels** composted monthly, generating **3 tons of organic manure** annually for landscaping.

## WATER MANAGEMENT: CONSERVING EVERY DROP

**Kumaraguru's Sewage Treatment Plant (STP)** and water conservation systems ensure optimal **water recycling and usage efficiency**

**5 rainwater harvesting systems** and **2 percolation ponds** harvest over **80 lakh liters of rainwater annually**.

Water-efficient fixtures save **50,000+ liters daily**, reducing overall water consumption significantly.

The **1 MLD STP using MBBR technology** treats approximately **7 lakh liters of used water daily**, achieving **100% wastewater recycling** for landscape irrigation.

# RESOURCE MANAGEMENT AND BIODIVERSITY PRESERVATION



The institution's campus is a thriving example of biodiversity preservation resource management:

- **5,000+ trees from 70+ species** provide a lush, eco-friendly environment.
- **90+ bird species** and **55+ butterfly species** recorded, reflecting a balanced ecosystem.
- The **Ahimsa Vanam**, a **1-acre curated tranquil forest**, is home to **150+ species of flora and fauna**, promoting biodiversity awareness.
- The native tree nursery nurtures **1.5 lakh seedlings annually**, with **75,000 saplings planted for afforestation efforts**.
- **10+ honey hives** maintained on campus have harvested **25+ liters of honey**, showcasing the importance of natural pollinators.

## REDUCING PAPER USAGE AND PROMOTING ENVIRONMENTAL ACCOUNTABILITY

The Paper Usage Policy has reduced **6.7 tons of paper usage**, saving **200+ trees annually**.

These efforts promote **minimal waste generation** and **emphasize resource conservation**.

---

## CLIMATE-SMART DAIRY ENTREPRENEURSHIP PROGRAM: DRIVING AGRICULTURAL SUSTAINABILITY

Received Rupees **3.4 crores**, from **environmental defence fund** impacting **10,000+ farmers** and **improving** the lives of over 1,00,000 cattle and buffaloes.

Supported **100+ dairy entrepreneurs**, hosting **10+ stakeholder workshops** and engaging **15+ experts**.

Conducted cohort identification workshops across **2 districts**, with **1,500+ dairy entrepreneurs** participating to adopt sustainable and scientific dairy practices.

# PARIYUR

## EMPOWERING WOMAN FARMERS

Kumaraguru Institute of Agriculture, in partnership with the **National Agricultural Cooperative Marketing Federation of India Ltd. (NAFED)**, has set up a Farmer Producer Organisation in the **Gobichettipalayam block of Erode District**.

A women-led organization, it supports women farmer members who are livestock owners.

Focuses on enhancing the productivity and profitability of **10,000+ livestock farmers** in Erode district through various services related to livestock farming.

---

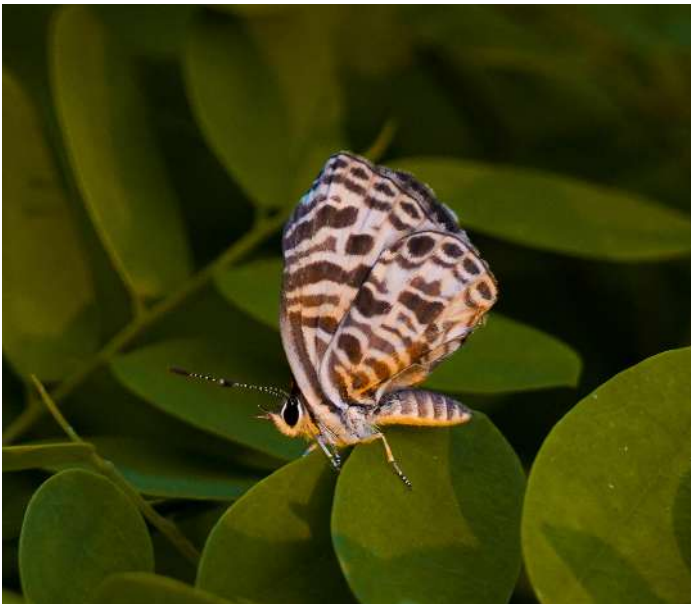
# MOTOR MECHANICS

## TRAINING FOR FOREST OFFICERS

The Department of Automobile Engineering at Kumaraguru College of Technology trained **50+ officer trainees from the Central Academy for State Forest Service (CASFOS) over three days**.

The training provided basic knowledge about vehicle mechanics and operations.

Equipped officers to manage situations and make informed decisions in the field, where vehicles are vital for conservation, protection, and patrolling activities.



## BIODIVERSITY STUDY

**The Samathur Biodiversity Study** is a yearlong initiative focused on documenting and preserving the rich biodiversity of the Samathur wetland. Conducted in collaboration with the **Coimbatore Nature Society (CNS)** and the **Tamil Nadu Butterfly Society (TNBS)**, the project highlights Kumaraguru Institutions' commitment to **environmental conservation**.

## Study Highlights

### Bird Species

Over **130 bird species** documented, highlighting the wetland's importance as a crucial habitat for both resident and migratory birds.

### Butterflies

More than **100 butterfly species** recorded, showcasing the vibrant and diverse ecological balance in the region.

### Flora

Over **120 plant species** identified, emphasising the wetland's rich biodiversity and its role in supporting a wide variety of ecosystems.

### Field Surveys

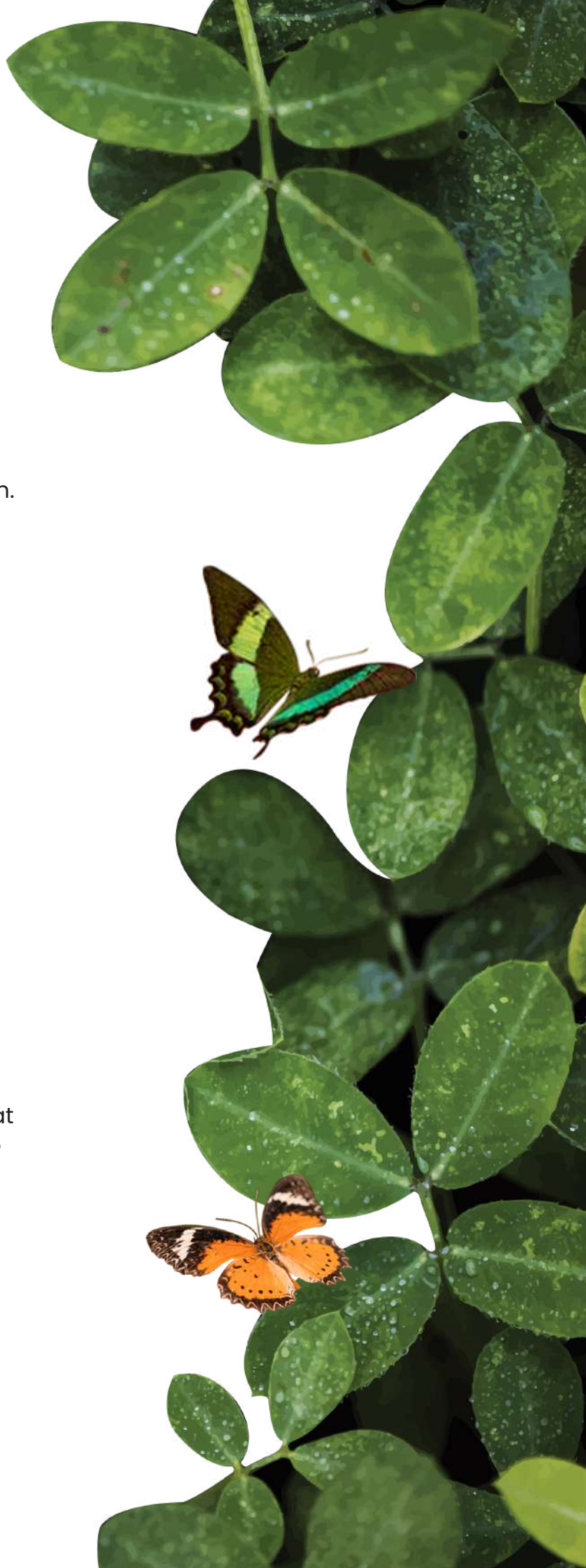
Monthly field surveys are conducted by **10 experts and 10 student volunteers**, contributing to data collection and fostering collaboration between scientific researchers and the next generation of conservationists.

### Study Goal

The primary objective is to design sustainable conservation strategies that promote long-term ecological balance and resilience against environmental challenges.

### Community Engagement

Collaborative efforts and scientific research are raising awareness, involving local communities, and contributing to sustainable development goals.



# TREE PLANTATION INITIATIVES



On Indian Air Force Day-**40 NCC cadets from Kumaraguru College of Technology** **planted saplings** along the shore of a local lake. This initiative aimed to increase **environmental awareness** while enhancing the region's **natural beauty**.

---

In collaboration with **NGO Siruthuli and Rotary Central**, a project was launched to **plant 5,200 trees** using the **Miyawaki method in Perur**. This initiative emphasizes the long-term **ecological benefits of forestation**.

---

The **Nature Club** organized a **tree-planting** event at **Government High School, Gandhimanagar**, where **Soursop plants** were introduced. This initiative aimed to **promote environmental conservation** and **enhance air quality** in the area.



# AWARDS AND RECOGNITIONS

## ACKNOWLEDGING SUSTAINABILITY EFFORTS

Kumaraguru Institutions have earned multiple accolades for their sustainable practices:

**National Institute of Disaster Management (NIDM)** recognized the Campus Sustainability initiatives of **Kumaraguru Microcosm and Kumaraguru Action for Relief and Empowerment (KARE)** for their disaster response activities as among the best practices in the country.

**IGBC Platinum Rating for Green Building Certification** Secured for 5 consecutive years with 81 points.

**Bhumi Campus Awards 2022 for Socially Responsible Campus, Resource Recovery Park, and Ahimsa Vanam.**

**Green Championship Award** by the Tamil Nadu Pollution Control Board (TNPCB).

**Zee Edu Future Changemakers Award** for Best Environmental Practices.

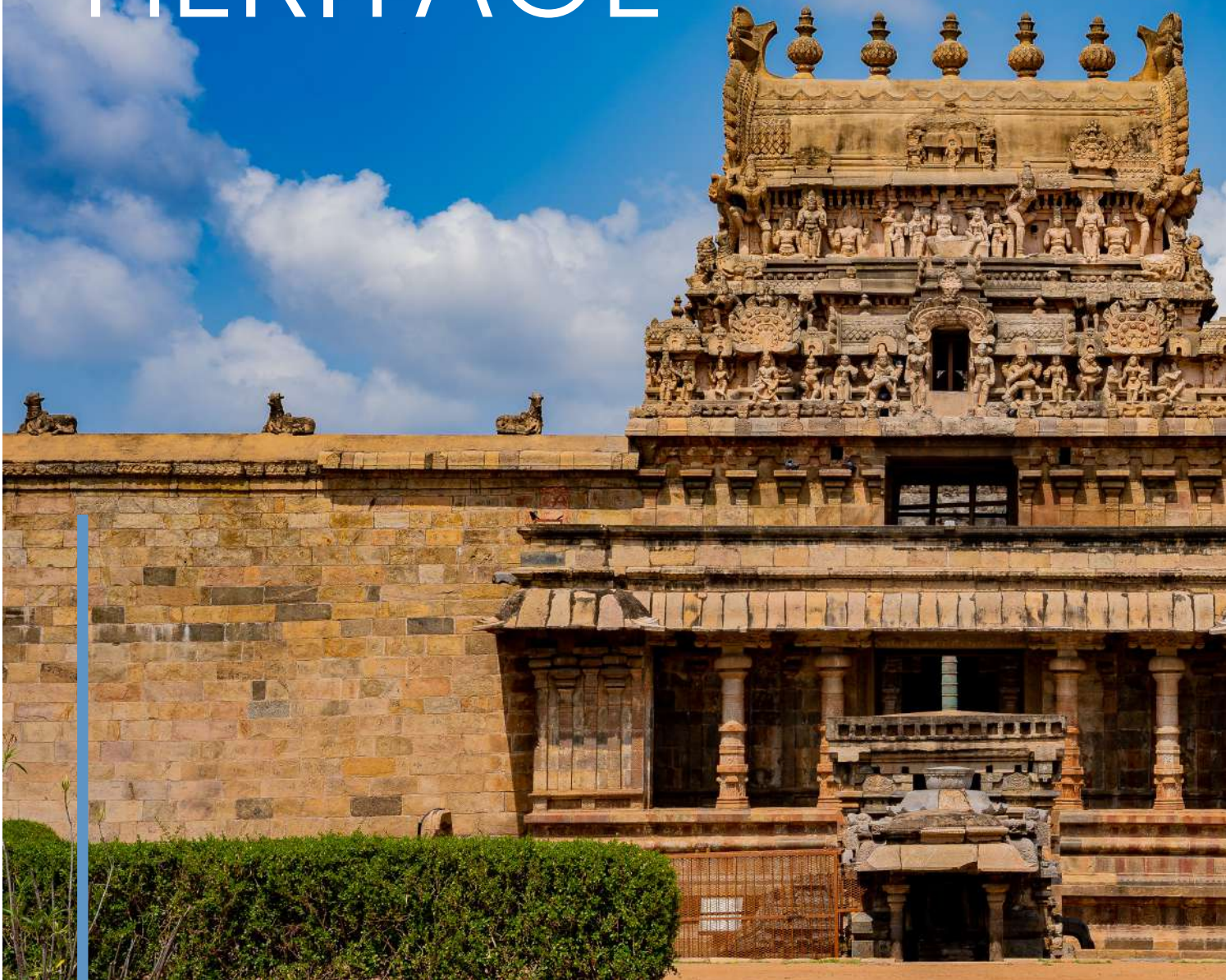


# ENVIRONMENTAL SUSTAINABILITY

Kumaraguru Institutions' Environmental Sustainability initiatives reflect a thoughtful commitment to creating a greener and more sustainable future. By integrating renewable energy solutions, effective waste and water management systems, biodiversity conservation, and sustainable agricultural practices, the institution fosters environmental responsibility and community engagement. These initiatives contribute to long-term ecological balance while empowering communities and promoting sustainable development goals.



# CULTURE & HERITAGE



## Preserving Traditions: Kumaraguru's Focus on Culture and Heritage

Kumaraguru Institutions are committed to preserving cultural heritage through initiatives supporting **traditional crafts and artistic development**. By integrating **upskilling programs, entrepreneurship training, and community engagement**, the institution ensures that traditional crafts remain relevant and sustainable while promoting cultural awareness and empowerment.



Kumaraguru's efforts are fostering **economic empowerment, cultural preservation, and sustainability.**

By supporting **handloom artisans and local artists**, these initiatives ensure a lasting impact on the community, preserving cultural heritage for future generations.

## Highlights

### Supporting Handloom Weavers

- **PMKVY 4.0 Upskilling Program:** **28 weavers** trained with **₹66,500 budget**, benefiting over **150 individuals**.
- **Entrepreneurship Development:** **20 weavers** trained on business skills, improving market reach.
- **Jamakkalam Weaving Training:** **₹9,100 invested** to modernize traditional weaving for contemporary markets.

### Heritage Support

- **Perur Trust Donation:** **₹630,000 for Mutt Upgradation**, enhancing community facilities.
- **Ukkadam Temple Donation:** **₹195,000** Donated for temple renovation.
- **Avinashi Temple Restoration:** **₹855,957** for cultural preservation and restoration.
- **Sundara Swamigal Trust Services:** **₹60,000** for **Cultural services** and **₹254,043** for **Kumbabishekam**.

### Promoting Traditional Crafts and Arts

- **Khadi Development Donation:** **₹47,248** to sustain Khadi weaving.
- **Support for Local Artists:** **₹37,000** donated to foster local artists and cultural initiatives.
- **Mangayarkarasiyar Araneri Arakkattalai:** **₹20,00,000** to support the rich cultural heritage of Tamil Nadu.

**₹66,500** for handloom weavers' upskilling

**₹1,935,000** donated for Culture and Heritage

**20 weavers** trained in entrepreneurship



Centre for  
**Weavers**

## CENTRE FOR WEAVERS

The Centre for Weavers (CW), in partnership with the **Technology Information, Forecasting, and Assessment Council (TIFAC)**-National Facility for Research and Training in Handloom Clusters (NFRC), has undertaken significant initiatives from **June 2023 to May 2024** to preserve traditional handloom crafts and empower weaver communities across India. These programs focus on upskilling, entrepreneurship, and modernizing handloom weaving, ensuring that artisans continue to thrive in a rapidly evolving market.

# UPSKILLING AND TECHNICAL TRAINING FOR WEAVERS



## PMKVY 4.0 HANDLOOM WEAVERS UPSKILLING PROGRAM



**The Prime Minister Kaushal Vikas Yojana (PMKVY) 4.0** Handloom Weavers Upskilling Program trained **28 weavers**, enhancing their practical weaving skills and industry knowledge. With a budget of **INR 66,500 and 50 hours of training**, the program aimed to bridge the skill gap and modernize techniques within traditional handloom practices.

### Impact

To **upskill weavers** in technical aspects of weaving, ensuring that they are equipped with the knowledge to thrive in the evolving handloom industry. The training positively impacted over **150 individuals, providing weavers with industry insights**, better technical skills, and improved prospects for growing their businesses.

# WEAVER TRAINING INITIATIVES: ENTREPRENEURSHIP DEVELOPMENT PROGRAM



Kumaraguru's **KCT Business School** and the **Department of Fashion Technology** hosted an **Entrepreneurship Development Program** in Thoddampalayam, Erode District, focused on **Jamakkalam weaving**. The event, held from **January 4-5, 2024**, attracted **20 weavers** and covered key business skills such as **cost sheet preparation and the business canvas model for handloom enterprises**.

## Impact

To teach **business management** and **entrepreneurship skills** to handloom weavers, helping them run their businesses more efficiently and expand their market reach.

By focusing on **entrepreneurial skills**, the program has enabled weavers to manage their small enterprises better, ensuring **sustainability and growth** in their businesses.

# JAMAKKALAM WEAVING: EMPOWERING ARTISANS FOR MODERN MARKETS



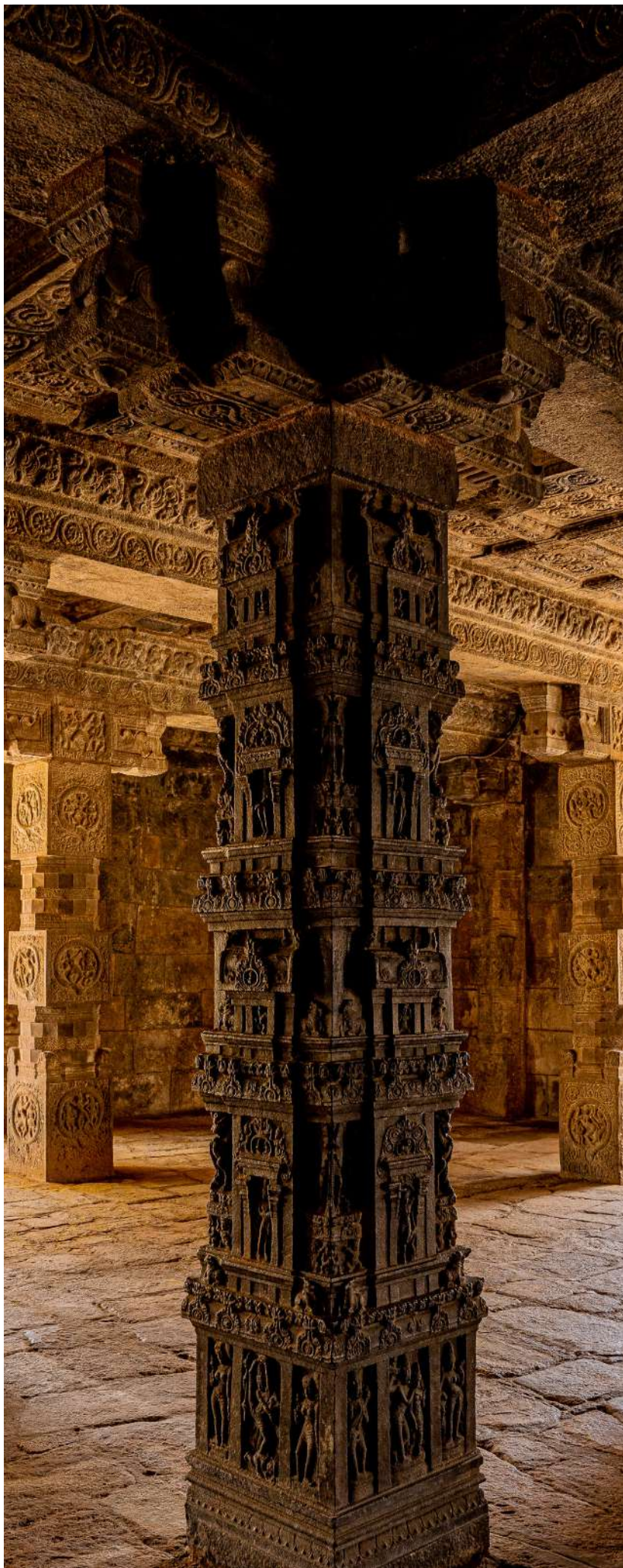
**The Jamakkalam Weaving Training Program**, with a budget of **INR 9,100**, provided **critical skills** in **natural dyeing and product development**, empowering weavers to **adapt traditional crafts for modern markets**. The program focused on **Jamakkalam handloom weaving**, a traditional craft, and helped participants develop products that cater to contemporary tastes.

## Impact

**To modernize traditional weaving** by equipping artisans with the skills to create products that meet the demands of today's market.

The training has enhanced **product quality** and marketability, ensuring that traditional weavers can **expand their customer base** and sustain their livelihoods in a changing economic landscape.





HERITAGE

# PERUR TRUST DONATION SUPPORTING MUTT UPGRADATION



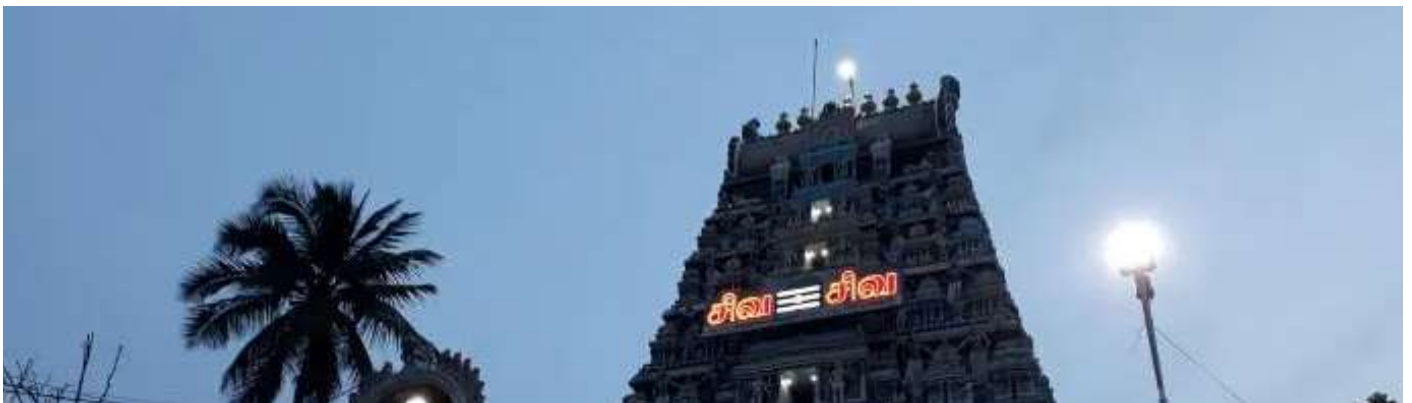
A donation of ₹630,000 was made to the **Perur Trust** specifically for the **Mutt Upgradation project**. This contribution focuses on **civil upgrades** to enhance the facilities and support the overall development.

# UKKADAM TEMPLE DONATION SUPPORTING TEMPLE RENOVATION

**A donation of ₹195,000 was made to the Ukkadam Temple, supporting its maintenance and renovation, reinforcing the institution's commitment to cultural engagement.**

---

# AVINASHI TEMPLE DONATION PRESERVING HERITAGE



**A significant contribution of ₹855,957 was made for painting expenses at the Avinashi Temple.**

# SUNDARA SWAMIGAL TRUST SERVICES DONATION PROMOTING CULTURAL HERITAGE



Contributions included **₹60,000 for Sundara Swamigal Trust services**, **₹25,000 for general donations**, and **₹254,043 for additional services at Avinashi**, including the **painting of the Gopuram for Kumbabishekam**.

## **Impact**

To support the Locality, preserving important traditions.

The donations have enhanced the life of the community, enabling continued ceremonies and the preservation of practices.

# PROMOTING TRADITIONAL CRAFTS AND ARTS



## KHADI DEVELOPMENT DONATION: SUPPORTING TRADITIONAL CRAFTS

A donation of **₹47,248** was allocated for the **development of Khadi**, promoting the **sustainable practice of traditional handloom weaving**.

### Purpose

To the sustainability of traditional Khadi weaving, ensuring that this cultural craft continues to thrive.

### Impact

The donation has contributed to revitalizing Khadi, supporting local artisans and promoting sustainable fashion.

---

## DEVELOPMENT OF ARTS SUPPORTING LOCAL ARTISTS

A donation of **₹37,000** was made to support the **development of arts**, with a focus on supporting **local artists and promoting cultural initiatives**.

### Purpose

To nurture local talent and promote arts and culture in the community.

### Impact

The donation helped empower local artists, giving them the opportunity to develop their skills and contribute to the cultural richness of the region.

# MANGAYARKASIYAR ARANERI ARAKKATTALAI



Mangayarkarasiyar Araneri Arakkattalai plays a key role in **preserving and promoting the Thevaram, an essential collection of devotional literature, in Western Tamil Nadu.**

## Purpose

To preserve and propagate the cultural heritage of Thevaram, focusing on moral teachings and devotional rituals.

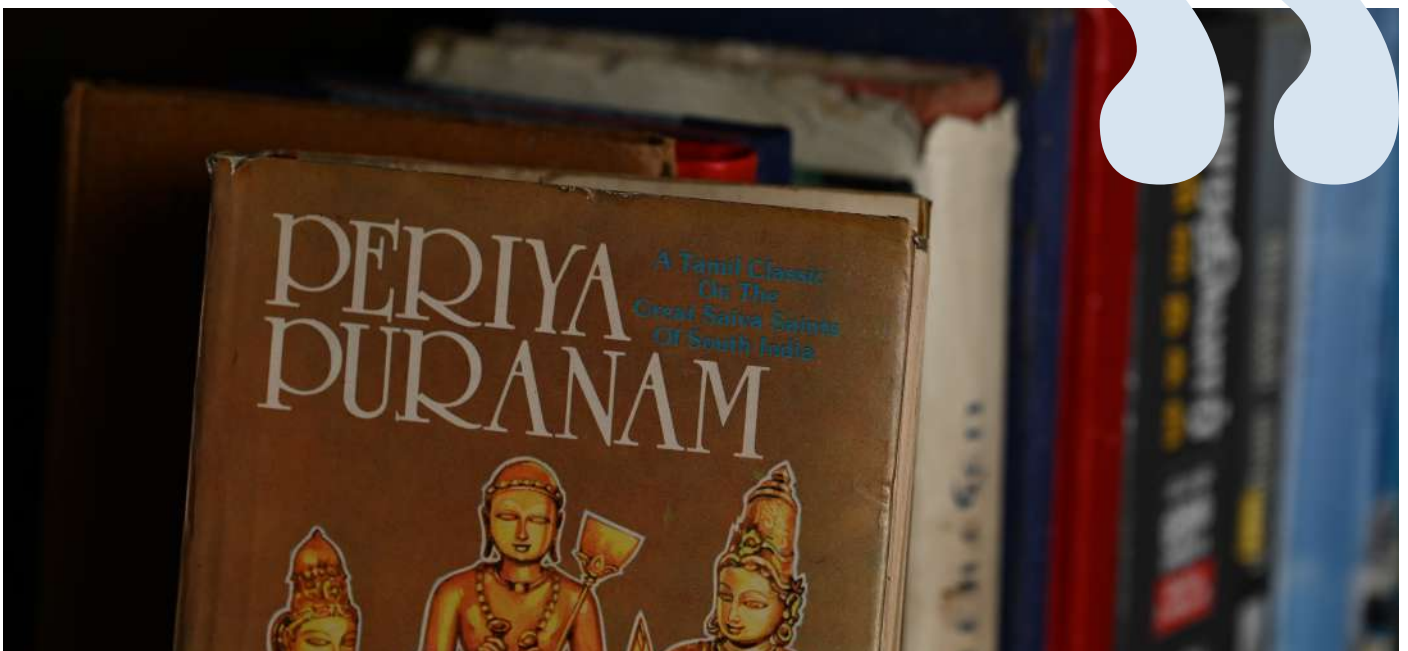
## Impact

Significant contributions to cultural preservation and education, with over ₹20,00,000 donated by Kumarakuru Institutions to support these initiatives.

## Scope:

Supports schools in selected districts by teaching moral lessons and devotional practices. Hosts a three-day summer refresher class annually for 200 students at the Kumarakuru campus.

**Kumarakuru Institutions' efforts to preserve culture and support heritage through financial contributions have created a lasting social impact by supporting religious institutions, promoting traditional crafts, and fostering education. Through these initiatives, the institution helps sustain and celebrate cultural traditions, ensuring that future generations can experience and benefit from the rich cultural heritage of the region. These programs demonstrate the commitment to community development and cultural preservation, contributing to the social fabric of society.**



# EMPOWERING INDIVIDUALS



## **Empowering Lives: Kumaraguru's Efforts in Individual Empowerment**

Kumaraguru Institutions are committed to **empowering individuals** across communities by providing educational opportunities, fostering inclusivity, and enhancing skill development. Through a variety of outreach programs and training initiatives, the institution works to ensure that people from diverse backgrounds have access to opportunities for **personal growth and economic empowerment.**



Kumaraguru's initiatives are driving personal and community growth. These programs ensure better access to education, health, and economic empowerment, creating an inclusive society where individuals have the tools to thrive and contribute meaningfully to their communities.

## Highlights

### Education & Skill Development

- **Community Welfare Workshop:** Health education for **students in multiple regions**, enhancing wellness and health literacy.
- **Digital Marketing Training: 21 participants** from self-help groups in Malumichampatti learned to promote their businesses via digital platforms.

### Promoting Inclusivity

- **Braille Bridges: 9 volunteers** taught Braille to **20 visually impaired** students, empowering them for independent living.

### Rural Communities & Agriculture

**Dairy Farmers Initiative: 120 farmers** in **Pothampalayam and Arakulam** received training on sustainable dairy management, aided by the **Nitara Dairy Farm app**.

**Budget:** ₹1,00,000

### Social Immersion Project: Run for Native Tribes

**Purpose:** Support **13 community** projects for **Kallar Pudur tribe**.

**Budget:** ₹2,50,000

### Key SIP Initiatives

**Education Fellowship:** Improving education for **40 tribal children**.

**Budget:** ₹40,710

**Weavers Training:** Empowering **58 weavers in Pollachi**.

**Budget:** ₹38,000

**₹2,50,000** allocated for Social Immersion Projects (SIP).

**339 volunteers** contributed 300+ hours

**120 dairy** farmers trained.



# COMMUNITY WELFARE WORKSHOP: PROMOTING HEALTH AND WELLNESS AMONG STUDENTS



A workshop aimed at **wellness and health education** was conducted at **Panchayat Union Middle School, covering several regions, including Thimmampalayam, Ganapathy, Pachapalayam, and Anaikatti**. The workshop focused on educating students about various important topics, **empowering them to take charge of their health and well-being**.

## Purpose

To raise awareness about **wellness and health education**, empowering students with knowledge that can improve their overall quality of life.

## Impact

Students gained crucial insights into maintaining good health and wellness, which contributed to a **healthier community** with better access to health knowledge.

# DIGITAL MARKETING TRAINING FOR SELF-HELP GROUPS



Faculty members from **KCT Business School** organized a **digital marketing training session for 21 participants** from **self-help groups in Malumichampatti, Madukkarai Block**. The session equipped participants with essential skills to promote their products and enhance their **business growth through digital platforms**.

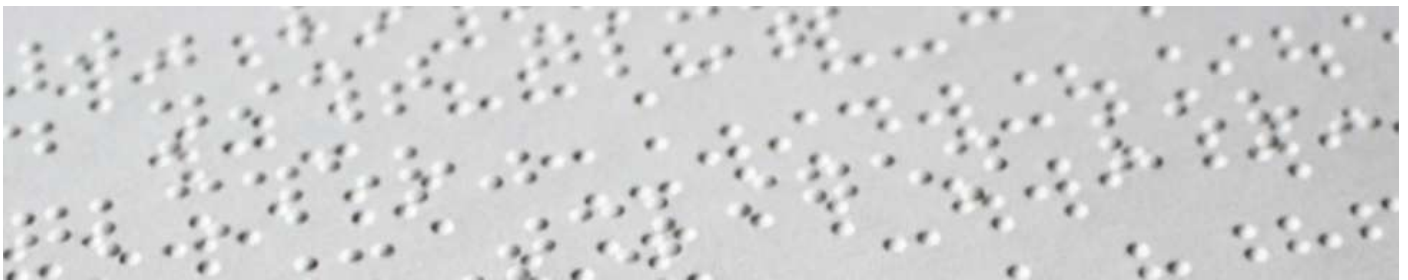
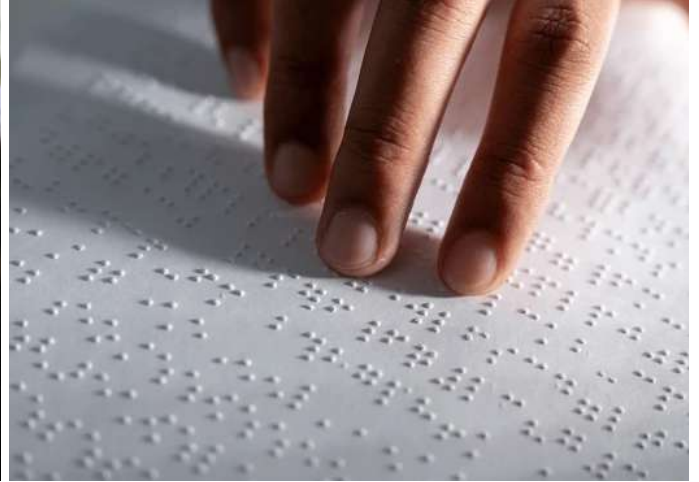
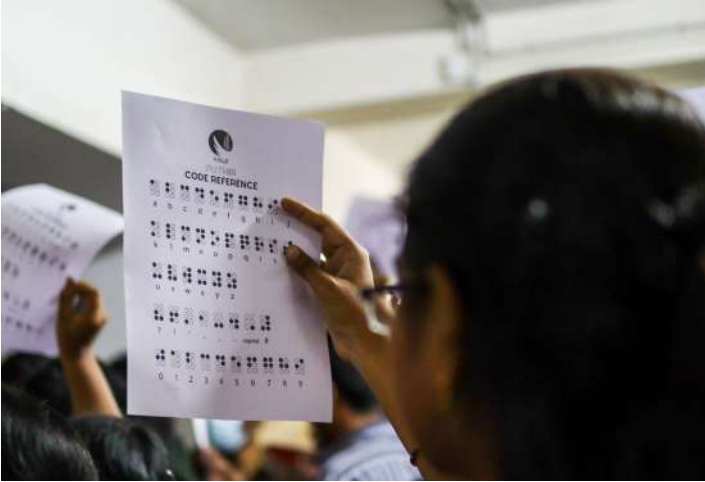
## Purpose

To provide **digital marketing skills** to local self-help groups, helping them expand their business reach and increase their income.

## Impact

Participants learned how to effectively **use digital marketing tools**, enabling them to promote their businesses and improve their economic prospects.

# PROMOTING INCLUSIVITY AND EMPOWERMENT



## BRAILLE BRIDGES: EMPOWERING VISUALLY IMPAIRED STUDENTS

In a heartening display of community support, **9 college volunteers taught Braille to 20 visually impaired students.** This initiative aimed to promote **empowerment and inclusivity** for the visually impaired, providing them with skills that enhance their independence and personal development.

### **Purpose**

To empower **visually impaired students** by providing them with the tools they need for personal growth and self-sufficiency.

### **Impact**

By teaching **Braille**, the initiative has opened new avenues for **education and personal development**, allowing visually impaired students to engage more actively in the community and society.

# SUPPORTING RURAL COMMUNITIES AND AGRICULTURAL SUSTAINABILITY



## PROMOTING SUSTAINABLE PRACTICES IN DAIRY FARMING

As part of the **KCT SEED funding program**, a focus group discussion was organized with **120 dairy farmers** from **Pothampalayam and Arakulam Villages**, where the introduction of the **Nitara Dairy Farm app promoted scientific dairy management**. The session emphasized best practices in feed and fodder management to improve **productivity and sustainability** in dairy farming.

**Budget: INR 1,00,000, with support from 30 volunteers.**

### **Purpose**

To introduce **scientific dairy management practices** that enhance productivity and sustainability in dairy farming.

### **Impact**

The Nitara Dairy Farm app and **discussions on feed and fodder practices** led to improvements in dairy management, promoting more efficient and **sustainable farming methods**.

# SOCIAL IMMERSION PROJECT: SUPPORTING NATIVE TRIBAL COMMUNITIES



**The Run for Native Tribes Marathon**, held on **March 3, 2024**, at **Velan Castle, Kovilpalayam**, was a flagship event of the **Social Immersion Project (SIP)**. Focused on raising awareness and funds for the **Kallar Pudur tribal community**, the marathon marked the third consecutive year of the initiative, aligning with the **United Nations Sustainable Development Goals (SDGs) 2030**.

## Purpose

To support **13 impactful projects**, contributing to the upliftment of the **Kallar Pudur tribal community** and fostering social responsibility.

## Impact

The event saw **600 participants** and **339 volunteers**, who contributed **300+ hours of effort**, benefiting **262 members of the community**.

## Budget:

The event was executed with a budget of **₹2,50,000**, supported by **key partners including Ezon Energy Solutions, Shankaraas Catering, Ozotec, Janatics, and Carex Services**.

# KEY INITIATIVES UNDER SIP

## Education Fellowship: Primary School Adoption

- **Purpose:**  
To improve education for **40 tribal children**, addressing **SDG 4 (Quality Education)**.
- **Impact:**  
Enhanced the quality of education for primary school children, fostering their academic growth and personal development.
- **Resources:**  
**₹40,710 budget, supported by 11 volunteers.**

## Menstrual Health and Hygiene Program

- **Purpose:**  
To address the health needs of **100 tribal women**, ensuring access to **menstrual hygiene and awareness**.
- **Impact:**  
Promoted health and well-being, aligning with **SDG 3 (Good Health and Well-being)** and **fostering a culture of awareness**.
- **Resources:**  
Supported by **Bliss Pads**, with a **₹15,000 budget and 13 volunteers**.

## Weaving Training for Handloom Weavers

- **Purpose:**  
To empower **58 handloom weavers in Pollachi** under the **PMKVY scheme**, promoting **SDG 8 (Decent Work and Economic Growth)** and **SDG 12 (Responsible Consumption and Production)**.
  - **Impact:**  
Improved weaving techniques and provided training for better market integration, enhancing the livelihoods of weavers.
  - **Resources:**  
**₹38,000 budget, supported by 2 volunteers.**
-

# COMMUNITY HEALTH AND WELL-BEING INITIATIVES



## 7-Day Special Camp: Health, Wellness, and Social Engagement

The **NSS\_RRC\_VBC of Kumaraguru College of Technology** organized a **7-day special camp** from **April 5th to April 11th, 2024** in several villages within **Karadimadai Town Panchayat**. This initiative aimed to **promote health, wellness, and community engagement** through a series of activities focused on **medical care, awareness programs, and social service**.

### Purpose

To improve the overall well-being of **villagers** by providing health services, raising awareness, and fostering community involvement.

### Impact

Over the course of the camp, **over 500 residents** benefited from medical camps, wellness activities, and social engagement efforts. The camp **enhanced community health and promoted active participation** in wellness practices.

## DAY 1: VILLAGE SURVEY & INAUGURATION

Volunteers surveyed over **200 people in Karadimadai village**, gathering insights into their **daily needs and concerns**. The camp was inaugurated at the Karadimadai Samudhayakoodam, with **Mr. Shiva from Kowsika Neerkarangal as the guest of honour**.

**Impact:** The survey provided a better understanding of the community's needs, ensuring targeted support in future initiatives.

## DAY 2: EYE CAMP & OLD AGE HOME VISIT

An **eye camp** in collaboration with **Vasan Eye Care served over 120 residents**. Additionally, volunteers visited the **Coimbatore District Welfare Association Senior Citizen Home**, bringing **laughter and joy** to the elderly.

**Impact:** The eye camp addressed vision problems, while the senior citizen visit improved the **mental well-being** of the elderly.

## DAY 3: HEALTH CHECKUP & CLEAN-UP

The **GUNAM health camp**, in partnership with **KMCH**, provided **general checkups** to over **150 residents**. Volunteers also conducted a **clean-up** in **Karadimadai and Kuppanur**, focusing on afforestation.

**Impact:** The health camp ensured **better health** for residents, while the clean-up enhanced the local environment.

## DAY 4: SIDDHA CAMP, ORGANIC FARM VISIT & LAUGHTER YOGA

A **Siddha camp** for **50 people** promoted natural medicine. Volunteers visited an **organic farm** to learn about **sustainable agricultural practices**. A **laughter yoga** session was held at the **Senior Citizen Home**.

**Impact:** This day promoted both **physical and mental well-being**, with a focus on **sustainable agriculture** and natural healing.



## DAY 5: GOVERNMENT ID CAMP & HEART THERAPY SESSION

The **Government ID camp** assisted **50 residents** in obtaining essential identification documents. In the afternoon, a **heart therapy session** using **art** was held at the Senior Citizen Home to uplift the elderly.

**Impact:** This initiative empowered individuals by providing them with necessary identification and **emotional healing** through creative expression.

## DAY 6: SAPLING PLANTING & TREKKING

Volunteers planted **saplings** at the **Senior Citizen Home**, promoting sustainability. They also enjoyed a **trek** to **Kovai Kutralam, Velingiri Adivaram**, and **Isha Yoga** in the afternoon.

**Impact:** This day contributed to **environmental sustainability** while fostering **community cohesion** through shared activities.

## DAY 7: ELECTION RALLY & VALEDICTION

An **election rally** was organized across multiple villages to raise awareness about **voting**. The camp concluded with a **valedictory ceremony**, thanking the villagers for their cooperation.

**Impact:** The rally promoted **civic engagement and encouraged voter participation**, empowering the community to actively engage in the democratic process.



# EMPOWERING INDIVIDUALS INITIATIVES

The Social Immersion Project (SIP) is a testament to Kumaraguru Institutions' commitment to fostering sustainable social change. By addressing the education, health, and livelihood needs of marginalized communities, SIP has made a lasting impact on the Kallar Pudur tribal community and beyond. These initiatives embody a culture of responsibility, collaboration, and sustainability, empowering individuals to create a better future for themselves and their communities.

# HEALTH AND WELLBEING INITIATIVES

The 7-day special camp by NSS\_RRC\_VBC was a comprehensive initiative aimed at empowering individuals through health, education, and social engagement. By providing essential health services, promoting environmental sustainability, and fostering civic responsibility, the camp made a lasting impact on the well-being and empowerment of the community. This initiative exemplifies Kumaraguru's dedication to creating positive social change and community development.





# INSIGHTS

## **Nivethan A M**

Assistant Vice President,  
Kumaraguru Institutions


---

The Social Impact Report 2023-24 reflects the purposeful journey undertaken by Kumaraguru Institutions to contribute meaningfully to society. Over the past year, various initiatives have come together to address diverse challenges and create opportunities for growth and empowerment.

These efforts, driven by collaboration and a strong sense of responsibility, are a testament to the institution's values and commitment to the community.

This report does not merely highlight outcomes; it captures the spirit of engagement and the dedication of those who worked tirelessly to bring these projects to life. From fostering inclusivity to promoting sustainable practices, each initiative has played a role in shaping a better future.

As we present this report, it is a moment to reflect on what has been achieved and to look forward to new opportunities for meaningful contributions in the years ahead.



# COMMUNITY CONTRIBUTIONS

Kumaraguru Institutions has demonstrated a strong commitment to social responsibility, contributing a total of ₹10,160,148 towards various philanthropic causes aimed at improving community welfare.

Below is an overview of our significant financial contributions:

## SOCIAL WELFARE INITIATIVES

A total of **₹649,895** was allocated to social welfare projects, highlighting our dedication to improving the quality of life in the community.

## SUPPORT FOR PUBLIC SERVICES

A donation of **₹57,850** was made to the **Police department's system service**, emphasizing our commitment to civic responsibility.

## TRAFFIC SIGNAL TRUST CONTRIBUTION

A contribution of **₹169,920** was made to the **Uyir Trust** for the installation of traffic signals, promoting road safety and awareness.

## MEDICAL TRUST CONTRIBUTION

We donated **₹500,000** was made to **KG Periyaswamy Medical Trust**, improving healthcare services and accessibility for underserved communities.

## ROTARY DONATION

We contributed **₹250,000** to the Rotary for social welfare initiatives, fostering collaborative efforts for community betterment.

## EDUCATIONAL SUPPORT FOR STAFF'S CHILDREN

An amount of **₹2,00,000** was allocated to educational support for staff members' children, demonstrating our commitment to fostering education within our workforce.

## MEDICAL SUPPORT INITIATIVES

A total of **₹100,000** was allocated for medical support, providing essential healthcare resources to the community.

## PUBLIC CHARITABLE TRUST DONATION

We pledged **₹152,907** to **Gandhi Vallar Vizha** conducted in Chennai, reinforcing our ongoing support for charitable endeavours.

# OUTCOMES

## 01 ENHANCED ENVIRONMENTAL AWARENESS

---

Ignited a transformative environmental movement, driving sustainable practices such as waste management and ecosystem conservation, empowering both students and the community to become passionate stewards of the environment.

## 02 EMPOWERED COMMUNITIES

---

Revolutionized community empowerment by providing education, vocational training, and scholarships, igniting resilience and providing individuals with the tools to shape their future with confidence and success.

## 03 CREATIVE EXPLORATION

---

Fuelled artistic innovation, offering a platform for local artists to showcase their work, celebrate cultural heritage, and foster creativity, enriching the community's artistic landscape.

## 04 ADVANCING INNOVATION

---

Catalysed cutting-edge research focusing on sustainable development and eco-friendly technologies, breaking barriers and providing innovative solutions to the world's most pressing societal challenges.

## 05 TRANSFORMING LIVES

---

Transformed marginalized communities by championing hope, dignity, and equality, creating a profound impact on individuals' lives and inspiring students to rise as powerful agents of change.

## 06 CULTURE OF WELLNESS

---

Pioneered a holistic wellness culture, prioritizing physical and mental well-being through health assessments and wellness programs, ensuring a nurturing environment for all.

## 07 POSITIVE SOCIAL IMPACT

---

Revolutionized social well-being by driving initiatives that provide healthcare and socio-economic support, fostering an inclusive and equitable society, where everyone has the opportunity to thrive.

## 08 PROMOTING EXCELLENCE

---

Celebrated academic and sports excellence, inspiring individuals to push their limits and achieve greatness, cultivating a culture where success is not just a goal, but a mindset.

## 09 SUSTAINABILITY LEADERSHIP

---

Spearheaded sustainability initiatives that provided healthcare and socio-economic support, paving the way for a more equitable, sustainable future, where environmental and social well-being go hand in hand.

# TESTIMONIALS



**DURGA**

Third Year - CSE

Reflecting on my journey, I am filled with deep gratitude for the personal transformation I have experienced. From uncertainty to purpose, I have evolved into a compassionate and driven individual, ready to make a meaningful impact. My time at Kumaraguru has not only provided me with knowledge but also instilled a profound sense of belonging. I am immensely thankful to the mentors and peers who shared their wisdom and fuelled my passion for contributing positively to society.

Joining Microcosm was an unexpected yet pivotal decision. I had no clear understanding of it, but that choice became one of the most transformative experiences of my life. It connected me with individuals who were passionate about sustainability and social change, deepening my empathy and solidifying my commitment to giving back. This experience has shaped my perspective and inspired me to uplift and empower others, forever cherishing the lessons and support that have shaped my future path.

**ANITA**

School Principal  
PUMS , Chinnavedampatti



We deeply appreciate the “Namadhu Pangu” initiative, which plays a crucial role in our children’s well-being by providing high-quality milk. The milk meets the students’ dietary requirements and contributes to their overall health. Routine assessments show that our students are in excellent health, and this KCT initiative has made a significant positive impact. We sincerely thank KCT for this valuable support.



**NAVEENYA**

School Student  
PUPS , Anjugam Nagar

We absolutely love the milk! It makes us feel so energetic, and we look forward to drinking it every day. Thanks to the milk, we can play longer in the evening and study better. We are also really grateful to the Anna’s and Akka’s who bring it to us every day!

# TESTIMONIALS



## **MUTHUKRISHNAN A**

Artisan

Age is no barrier when it comes to passion and entrepreneurship, as exemplified by Muthukrishnan A, a handloom weaver from Karuppampalayam, Pollachi. Through the PMKVY RPL training, I gained valuable insights into the business of handloom weaving. The entrepreneurship session particularly helped me understand the importance of adapting designs to market expectations. As a handloom Jacquard weaver for over 20 years, I have taken on the responsibility of managing raw materials, designing, and producing high-quality Pochampalli cotton sarees.

While the risks of mismatch in expectations are high, I am proud to say that the certification from PMKVY RPL has empowered me and given me more confidence. Now, I manage a small team of handloom weavers, a stark contrast to the rest of the village, where people mainly rely on master weavers. I take pride in my business, which produces 10 sarees weekly, and with my wife's support, we continue to thrive. The training has not only strengthened my business acumen but also inspired me to innovate and adapt in the post-COVID world. I'm ready to face the future with renewed confidence.

Personal Interview by Dr. B. Poongodi, KCT, PMKVY RPL Facilitator on 16 July 2020

## **BAVISHYA M**

Alumnus

Dept of Political Science



My transition from school to college has been a journey of growth, both academically and personally. In school, I was never seen as a standout student, even though I did well in my higher secondary. This self-perception of not being among the top students stayed with me for a long time. However, receiving the MGM scholarship has completely changed that narrative. It has healed my inner doubts, boosted my confidence, and motivated me to aim higher. I am incredibly

# STUDENT EDITORIAL TEAM

---

## CONTENT CONSOLIDATORS

Kavya Divagaran  
Ashmath S

## CONTENT EDITORS

Harithra  
Priyanka  
Magalachumi R

## CONTENT CURATORS

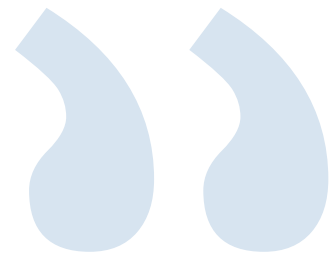
Shivani B  
Prateeksha V  
Azhagu Shanmathi M B  
Elankumaran R  
Adarsha  
Madhuranthika  
Sandeep V  
Vikasini S  
Namita G





**Our growth is not our own. It depends on others' expertise and support. We really grow only when our growth is supplemented by others' growth. Look upon them, not as your relatives or friends but members of society and strive to improve the community through them!**

**Dr. N Mahalingam**





# **KUMARAGURU** --- **Institutions**

Kumaraguru Institutions  
Saravanampatti, Chinnavedampatti (POST),  
Coimbatore- 641049, Tamilnadu.

---

E mail: [namadhu.pangu@kct.ac.in](mailto:namadhu.pangu@kct.ac.in) | [microcosm@kct.ac.in](mailto:microcosm@kct.ac.in)  
Landline : 0422-2661100